

NC 0020993 7



NATIONAL COLLEGE OF ART AND DESIGN

DEPARTMENT OF VISUAL COMMUNICATIONS

“ THE THIRD DIMENSION”

**A Thesis discussing Film, Advertising and Graphics
from a Three Dimensional Perspective**

Sinead Cliffe

**Submitted to the Faculty of History of Art and Design and Complementary Studies
in Candidacy for the Degree of Batchelor of Design**

1996

CONTENTS

Introduction.....	1
Chapter 1 Historical Review of three dimensional animation	3
Chapter 2 Nick Park, a connection of human and plasticene.....	10
Chapter 3 Henry Selick, a technical development.....	16
Chapter 4 Douglas Watson, a sculptural design.....	20
Conclusion	24

LIST OF PLATES

		<u>Page Numbers</u>
Figure 1:1	<u>Around the World in Eighty Days</u> , copyright Micheal Todd Productions	1
Figure 1:2	An early puppet film, Ladislav Starevitch, France 1934	1
Figure 1:3	<u>On Parade</u> George Pal, Holland	2
Figure 1:4	<u>The song of the Prairie</u> , directed by Jiri Trnka, Czechoslovakia	2
Figure 1:5	<u>The story of the Brass Cello</u> , directed by Jiri Trnka, Czechoslovakia	3
Figure 1:6	<u>A Garland of Folk Songs</u> , directed by Jiri Trnka, Czechoslovakia	3
Figure 1:7	<u>Old Czech Legends</u> , directed by Jiri Trnka, Czechoslovakia	4
Figure 1:8	<u>Don Juan</u> , directed by Jan Svankmajer	4
Figure 1:9	<u>Faust</u> , directed by Jan Svankmajer 1995	5
Figure 1:10	<u>Stille Nacht 2</u> , directed by Quay Brothers	5
Figure 1:11	<u>Unstable Worlds</u> , BBC ident, directed by Quay Brothers	6
Figure 2:1	Early Animation, Nick Park	7
Figure 2:2	<u>A Grand Day Out</u> , Gromit	7
Figure 2:3	<u>Creature Comforts</u> , Polar Bears	8
Figure 2:4	<u>Creature Comforts</u> , Koala Bear	8
Figure 2:5	<u>Creature Comforts</u> , Bird	9
Figure 2:6	<u>Sledgehammer</u> , music video, Peter Gabriel	9
Figure 2:7	<u>Sledgehammer</u> , music video, Peter Gabriel	10
Figure 2:8	<u>My Baby Just Cares For Me</u> , music video, Nina Simone	10
Figure 2:9	<u>Wrong Trousers</u> , Gromit	11
Figure 2:10	<u>Wrong Trousers</u> , Wallace	11
Figure 2:11	Early sketches of Wallace and Gromit	12
Figure 2:12	<u>Wrong Trousers</u> , Gromit	12
Figure 2:13	<u>Electricity Association Adverts</u> , Tortoise	13

Figure 2:14	<u>Wrong Trousers</u> , Sketches	13
Figure 2:15	<u>Wrong Trousers</u> , Breakfast	14
Figure 2:16	<u>Wrong Trousers</u> , Flying blob of jam	14
Figure 2:17	<u>Wrong Trousers</u> , Penguin	15
Figure 2:18	<u>Wrong Trousers</u> , Gromit leaves home	15
Figure 2:19	<u>Wrong Trousers</u> , Train Chase	16
Figure 2:20	<u>Electrical Association Adverts</u> , Cat	16
Figure 2:21	<u>Electrical Association Adverts</u> , Penguins (1)	17
Figure 2:22	<u>Electrical Association Adverts</u> , Penguins (2)	17
Figure 2:23	<u>Electrical Association Adverts</u> , Pigs	18
Figure 2:24	<u>Electrical Association Adverts</u> , Monkeys	18
Figure 3:1	<u>Nightmare before Christmas</u> , Graveyard scene	19
Figure 3:2	<u>Nightmare before Christmas</u> , example of special effects.	19
Figure 3:3	<u>Nightmare before Christmas</u> , example of Jacks expressions	20
Figure 3:4	<u>Nightmare before Christmas</u> , internal structure of puppets:	20
Figure 3:5	<u>Nightmare before Christmas</u> , Sally;	21
Figure 3:6	<u>Nightmare before Christmas</u> , Town Mayor;	21
Figure 3:7	<u>Nightmare before Christmas</u> , Oogie Boogie;	22
Figure 3:8	<u>Nightmare before Christmas</u> , a layer of insects;	22
Figure 3:9	<u>Nightmare before Christmas</u> , Jack enters the world of Christmas;	23
Figure 3:10	<u>Nightmare before Christmas</u> , Jack's first Christmas;	23
Figure 3:11	<u>Nightmare before Christmas</u> , Jack discovers Santy Claus	24
Figure 3:12	<u>Nightmare before Christmas</u> , Jack delivers the gifts	24
Figure 3:13	<u>Nightmare before Christmas</u> , Oogie Boogies cauldron	25
Figure 3:14	<u>Nightmare before Christmas</u> , Christmas and Halloween as one	25
Figure 4:1	<u>Scottish Illustrators</u> , commissioned by 999 Design (1995)	26
Figure 4:2	<u>Scottish Illustrators</u> , commissioned by 999 Design (1995), detailed section	26

Figure 4:3	<u>Childrens Hospital Poster</u> , commissioned by Edinburgh Childrens Hospital	27
Figure 4:4	Commissioned by <u>Aldus Photostyler</u> , photo Micheal Siebert	27
Figure 4:5	<u>Head Start</u> campaign	28
Figure 4:6	'Wooden Character' used in advertising	28
Figure 4:7	<u>Restricted</u> , Personal Piece	29
Figure 4:8	<u>Constructional Adam</u> , used in a book to illustrate the process of Watsons work	29
Figure 4:9	<u>Brochure Cover</u> , commissioned by the Bank of Scotland	30
Figure 4:10	<u>Brochure Cover</u> , commissioned by the Bank of Scotland, detailed section	30
Figure 4:11	<u>Festival Busker</u> , commissioned by Edinburghs Festival committee, photo Dougie McBride:	31
Figure 4:12	<u>Printing Brochure</u> , commissioned by a Glasgow Design Agency	32
Figure 4:13	<u>Science Festival Poster</u> , 1993 commissioned by the City of Edinburgh District Council	32
Figure 4:14	<u>Childrens Hospital Poster</u> , commissioned by Edinburghs Childrens Hospital	33

Chapter 1

Chapter 1

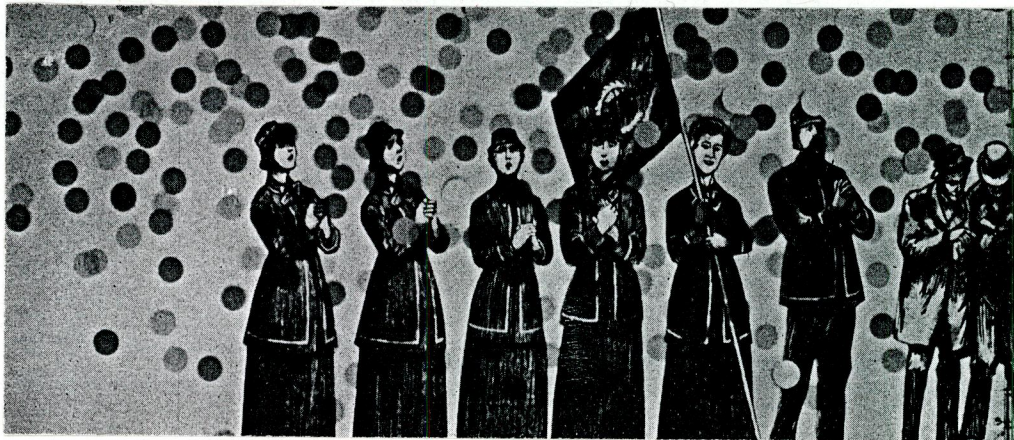


Fig 1:1

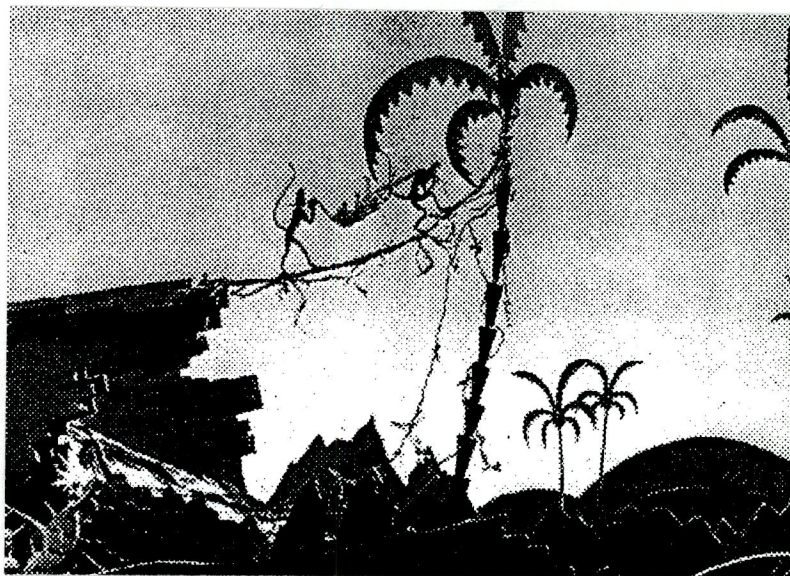
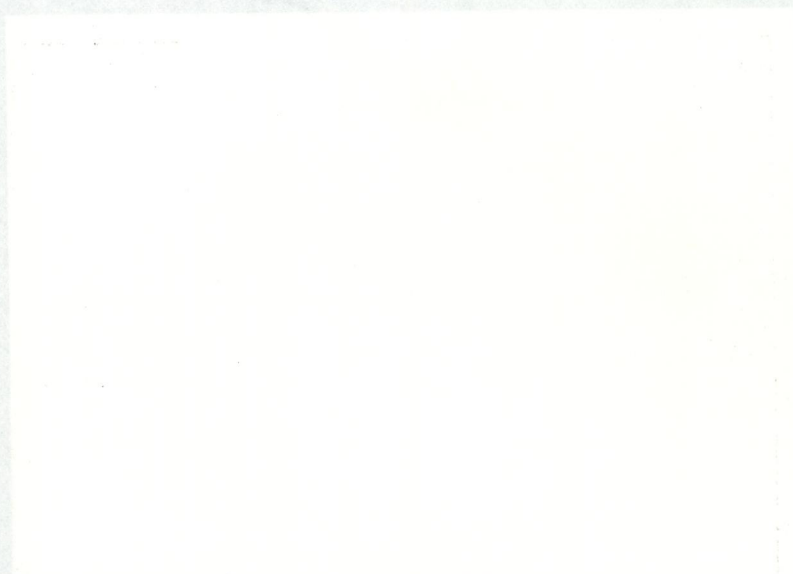


Fig 1:2



SWIFT BROOK



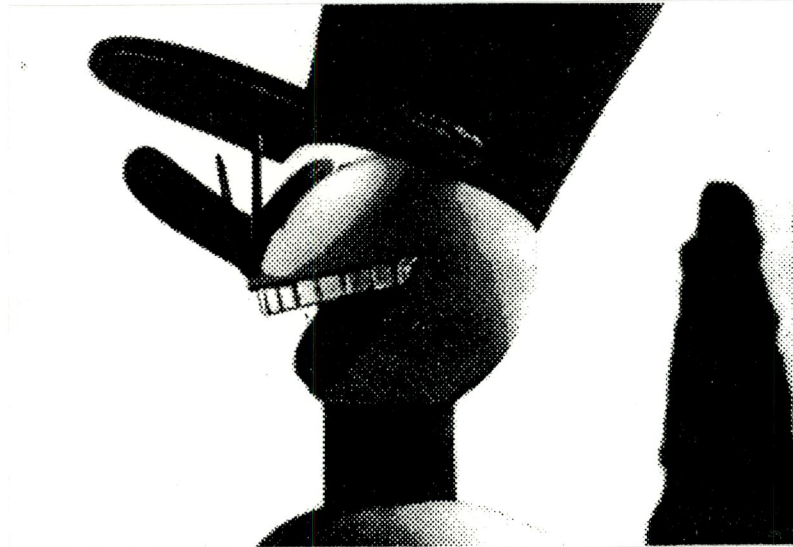


Fig 1:3



Fig 1:4



SWIFT BROOK





Fig 1:5

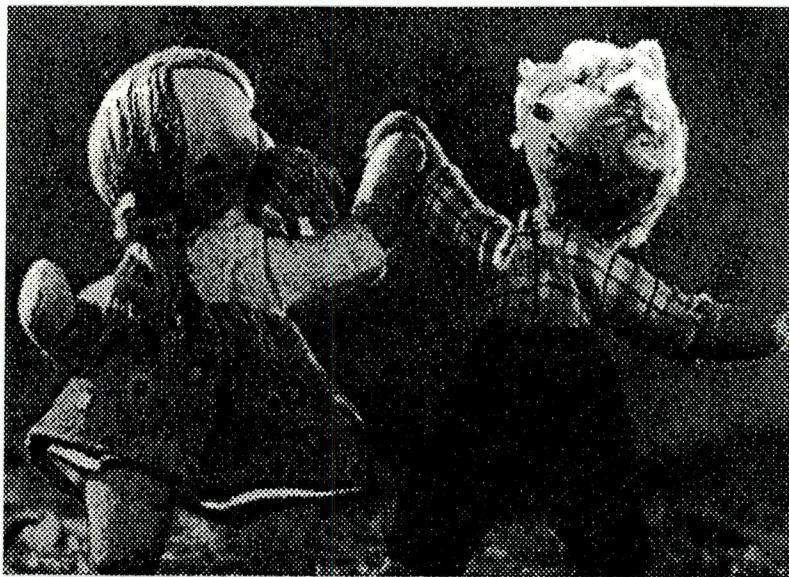


Fig 1:6



BOND

SALES & MARKETING



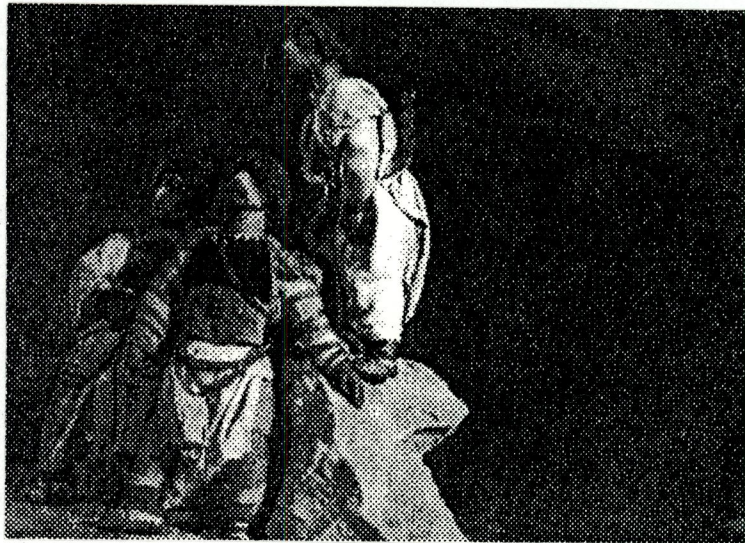


Fig 1:7

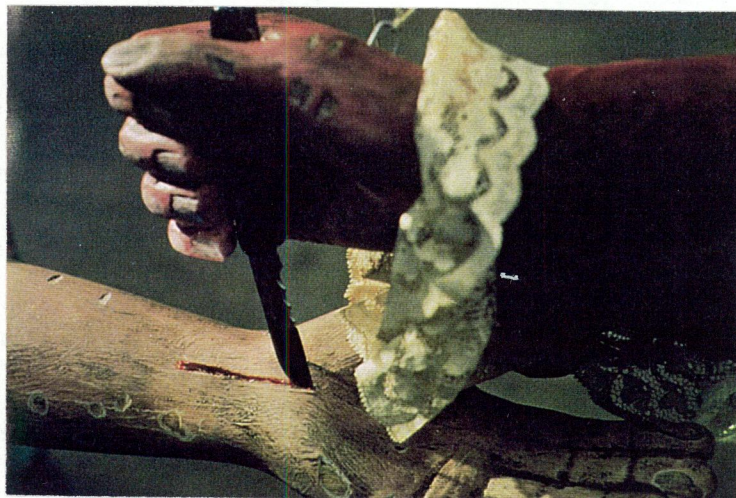


Fig 1:8



BOND
SAFETY BOOK





Fig 1:9

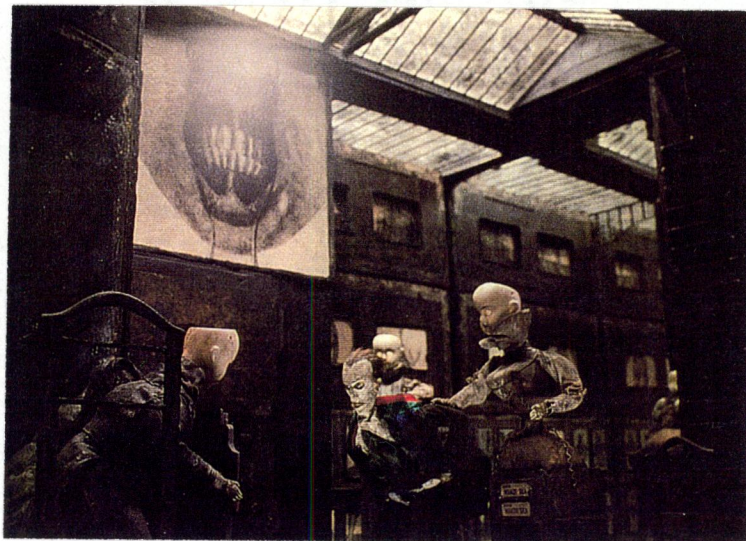


Fig 1:10



BOND

2/11/1910





Fig 1:11



BOND
SAVED BOOK

Chapter 2

Chapter 2



Figure 2:1

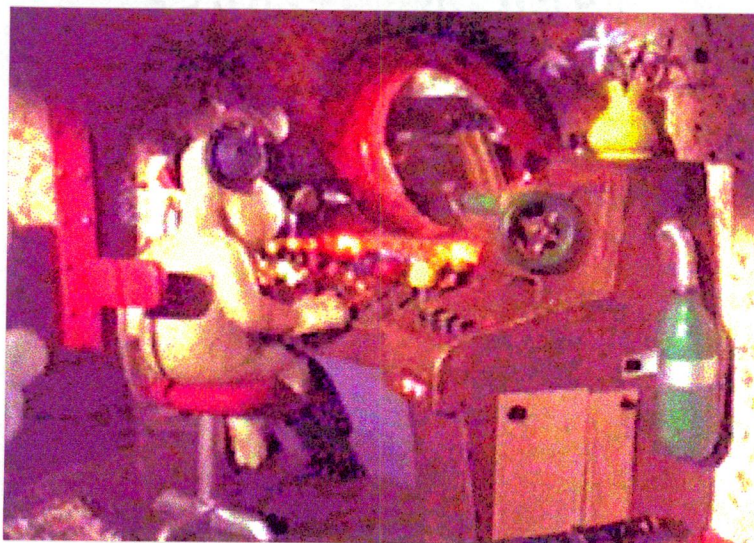
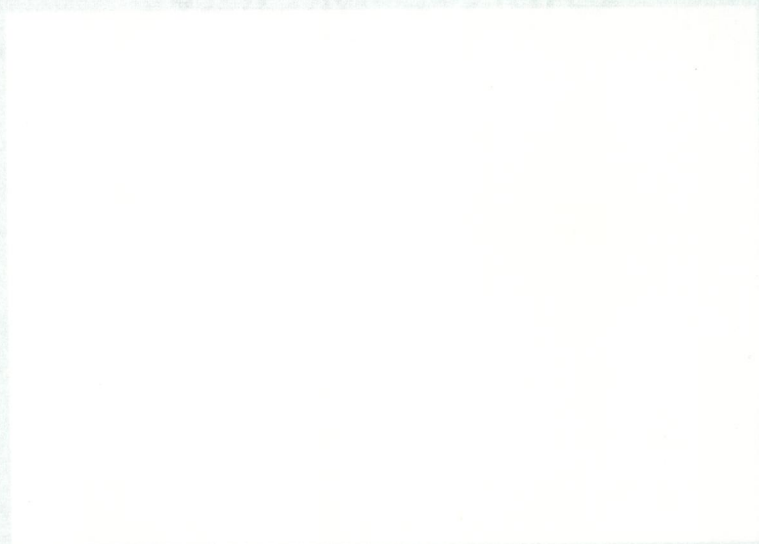


Figure 2:2



BOND

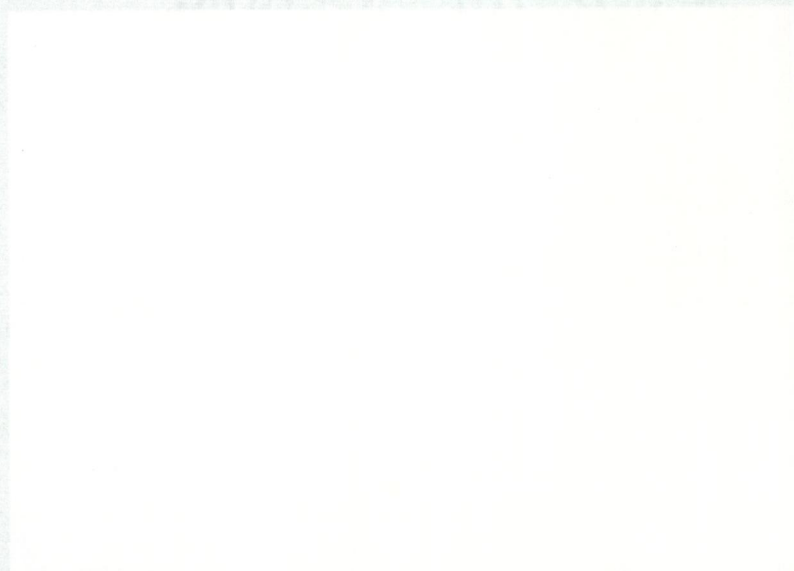
STANDARD BOND



Figure 2:3



Fig 2:4



BOND
SANDWICH



Fig 2:5



Fig 2:6



BOND
SMITH BOOK





Fig 2:7

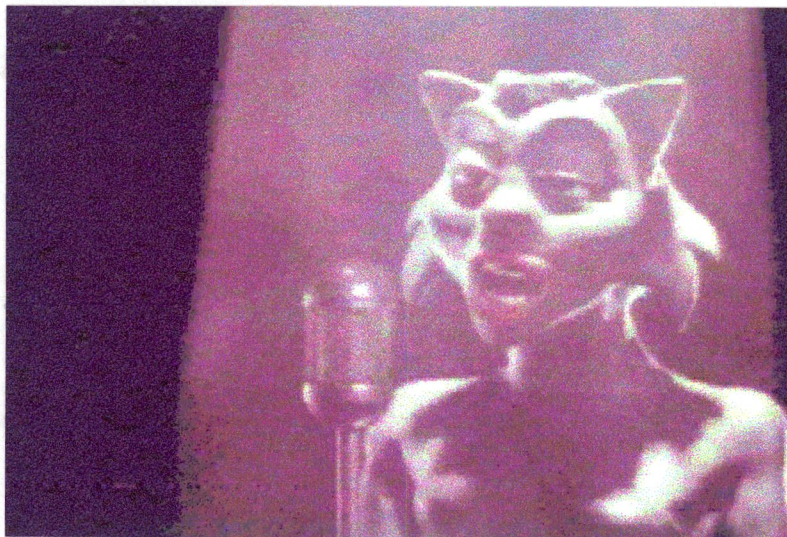


Fig 2:8



BOND
SALE BOOK

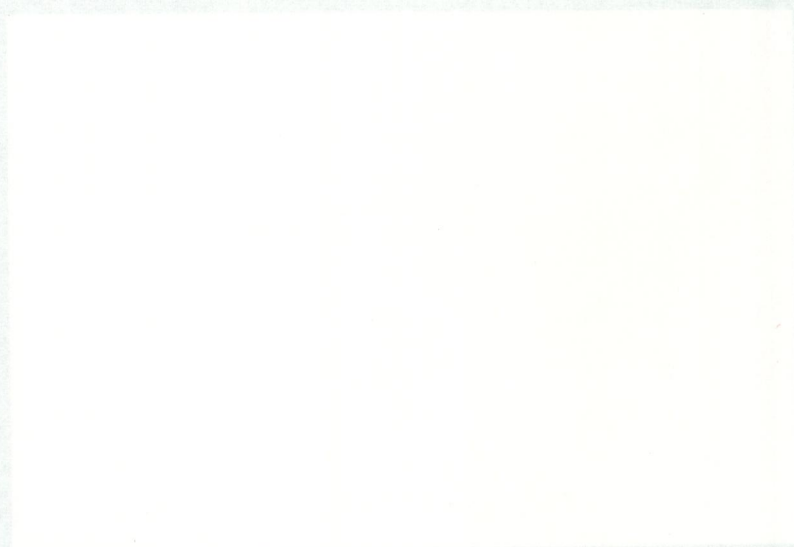




Fig 2:9



Fig 2:10



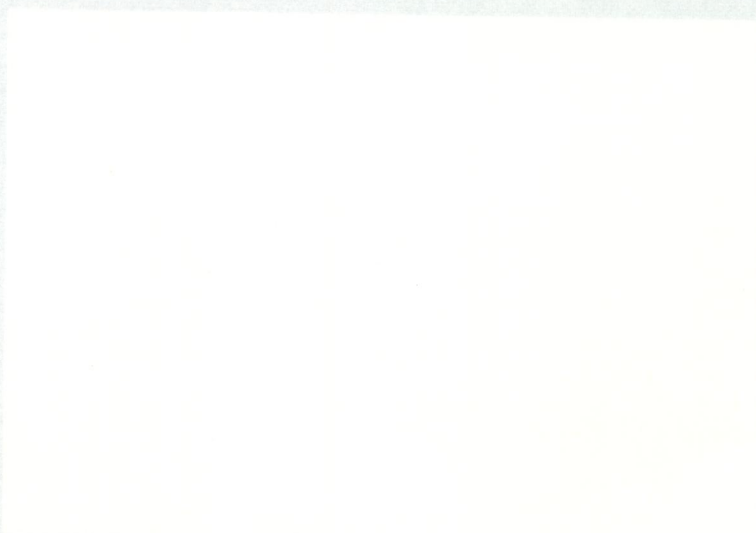
3049
SHEL BOOM



Fig 2:11



Fig 2:12



BOOM
SMILE BOOM





Fig 2:13

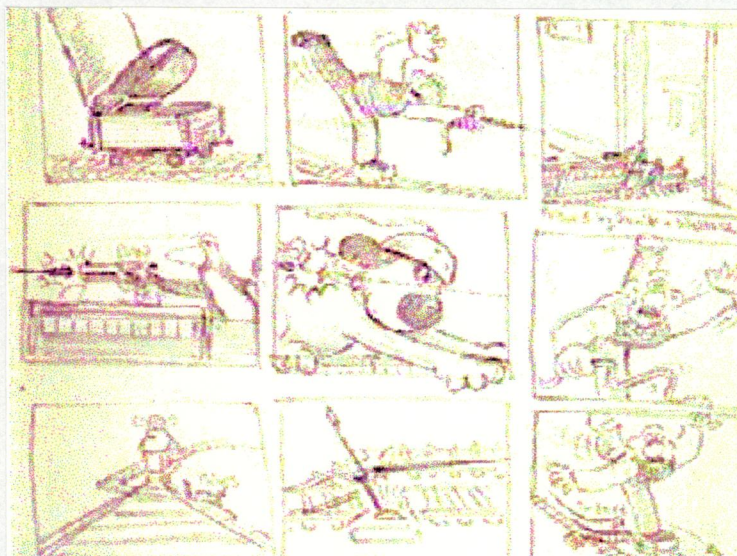
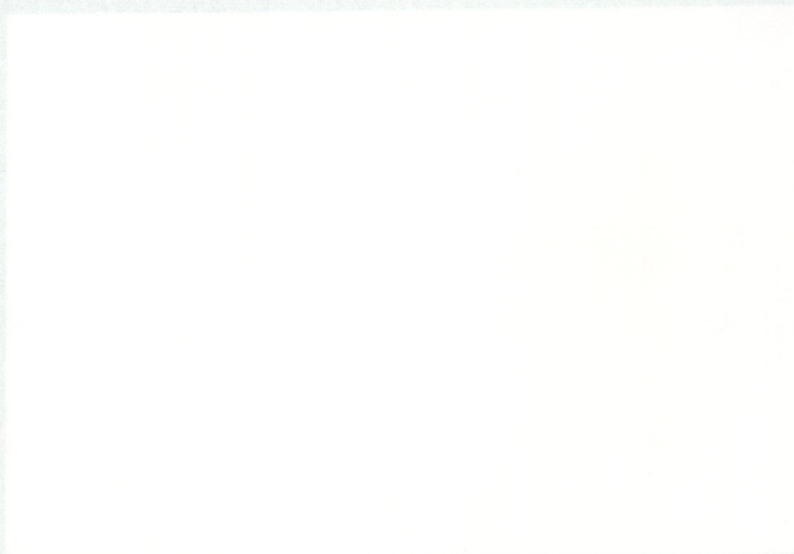


Fig 2:14



BOOK
SMALL BOOK



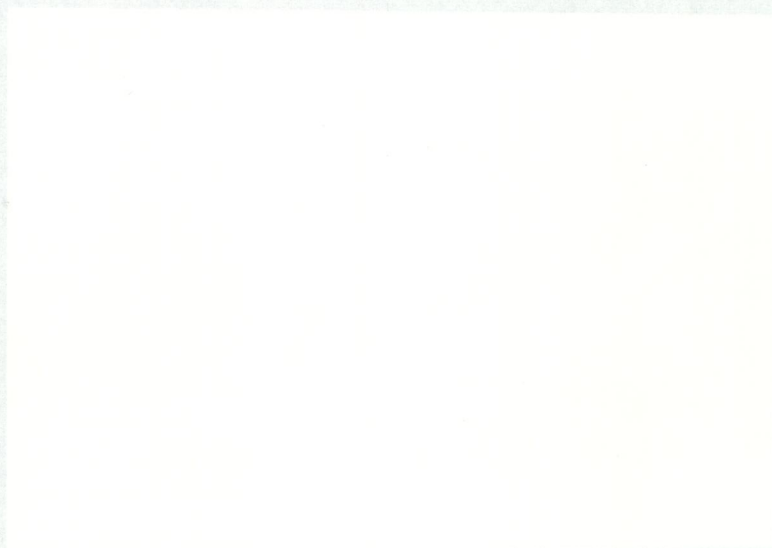
Fig 2:15



Fig 2:16



Small Book



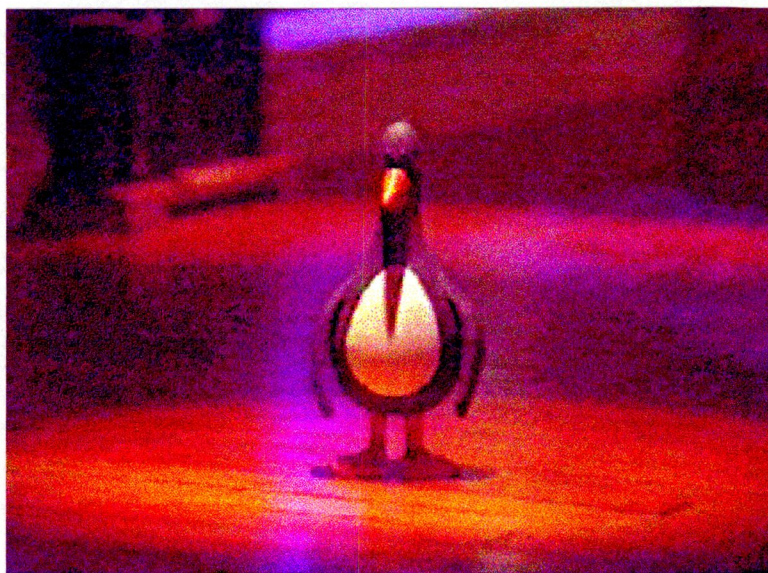


Fig 2:17



Fig 2:18



EMEL BOOK

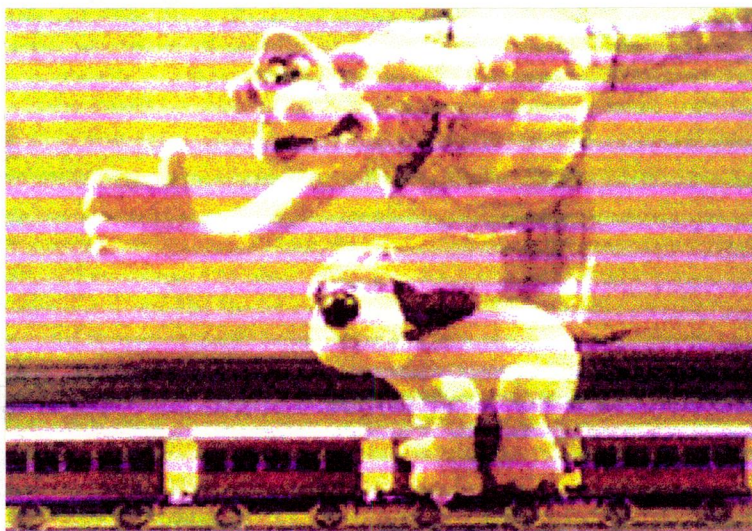
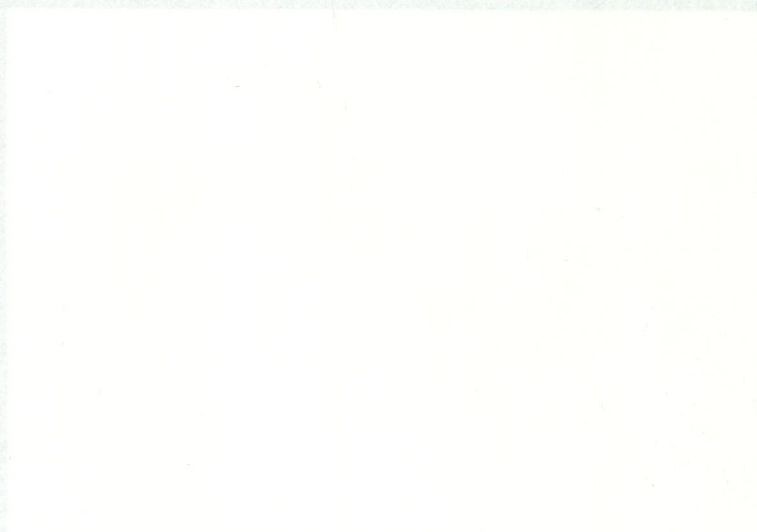


Fig 2:19



Fig 2:20



SMITH BROS
BOND





Fig 2:21



Fig 2:22



SMITH BROS
BOND



Fig 2:23



Fig 2:24



SMITH BROS
BOND

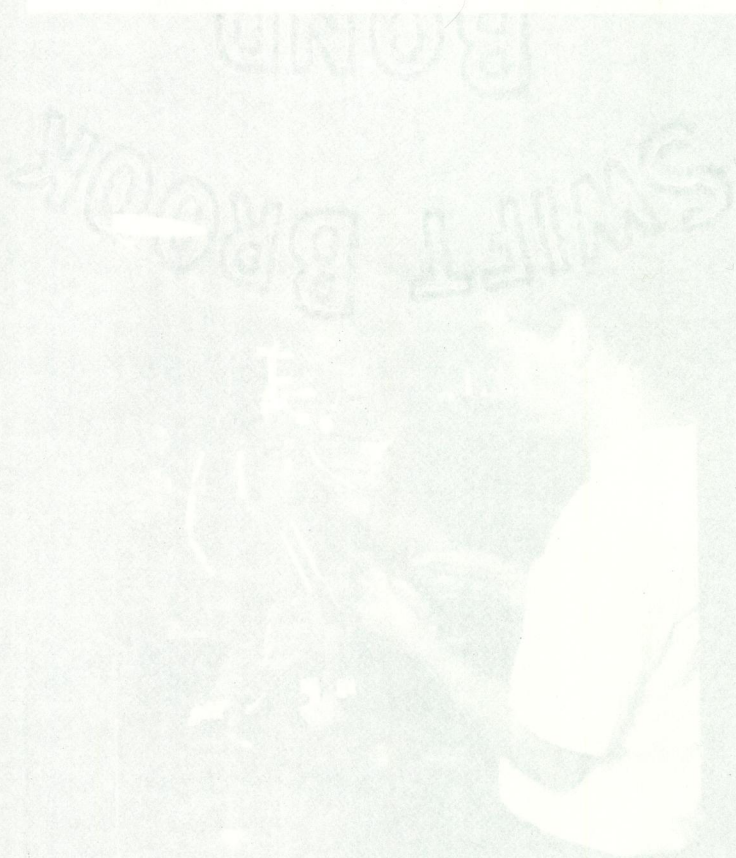
Chapter 3



Fig 3:1



Fig 3:2



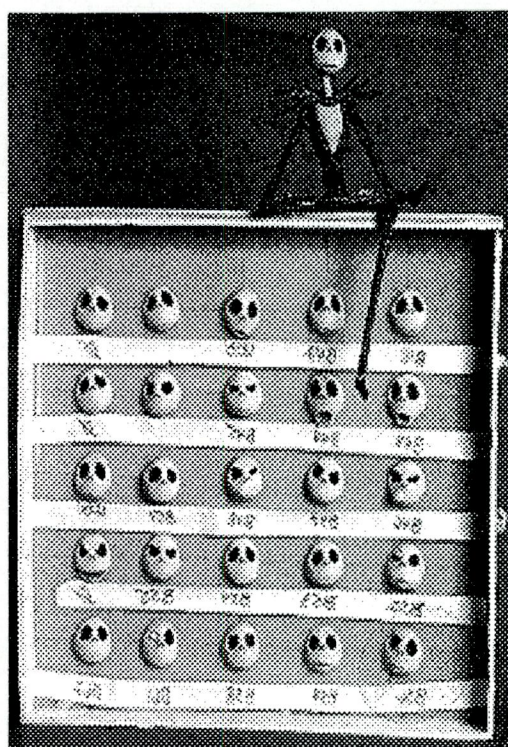


Fig 3:3

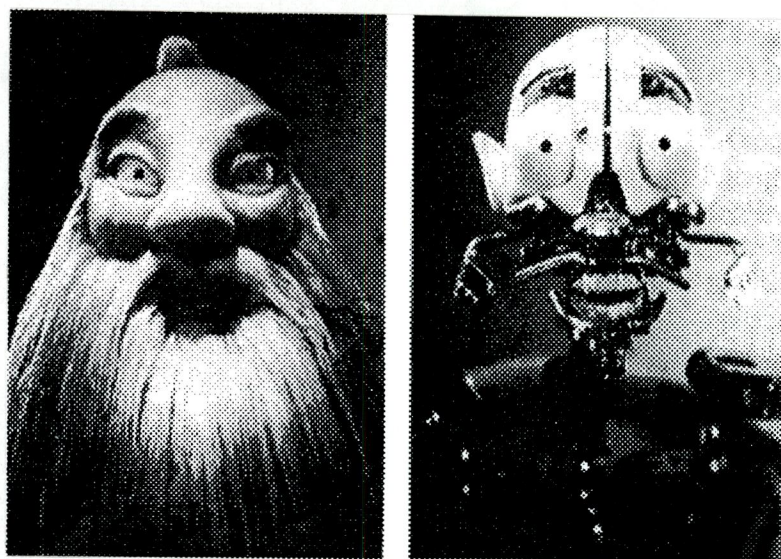


Fig 3:4



SMITH BROS
BOND





Fig 3:5

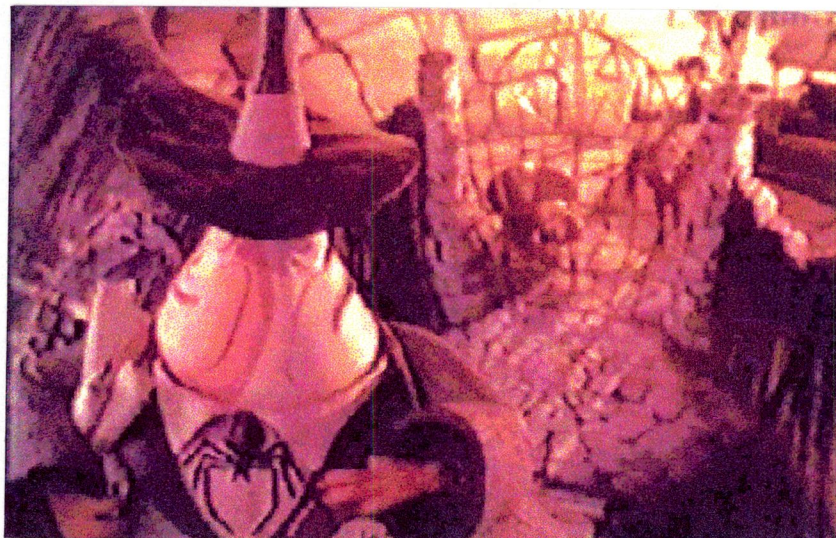


Fig 3:6



SMITH BOND
BOND





Fig 3:7

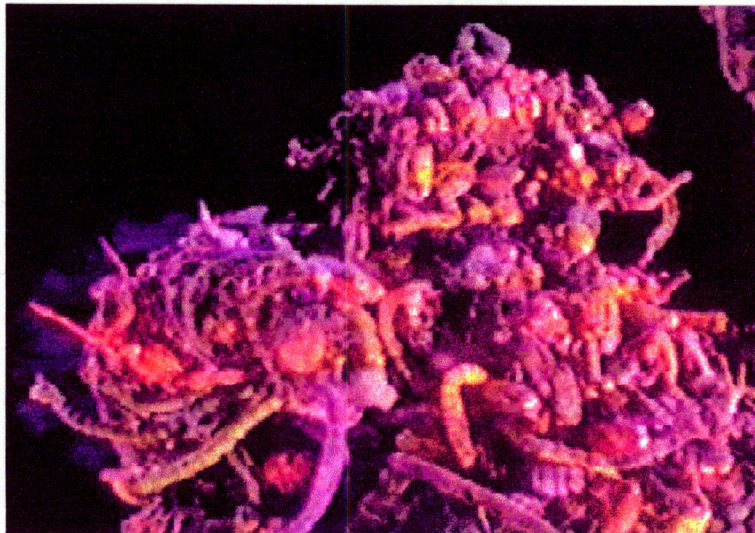


Fig 3:8



Fig 3:9

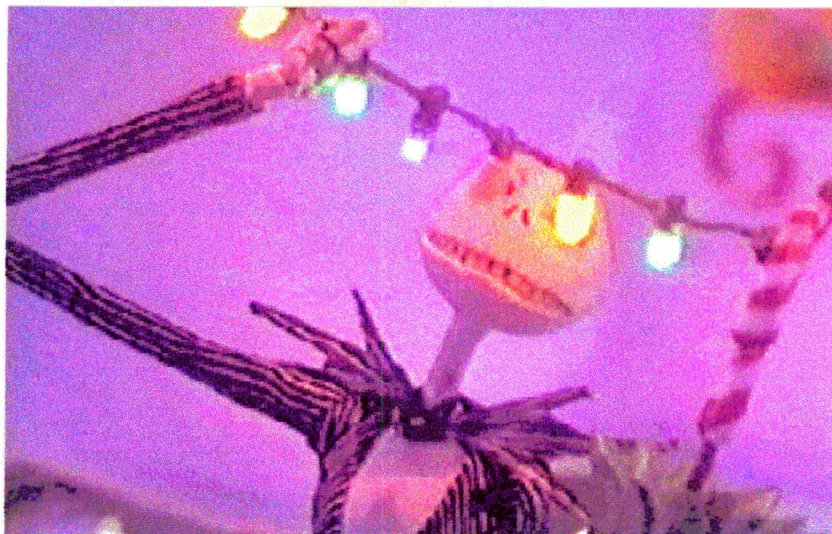
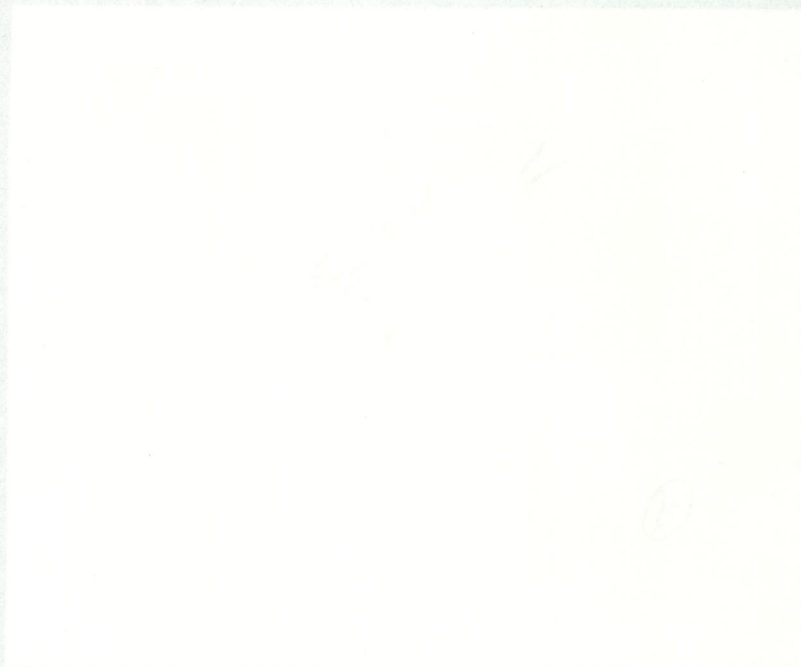


Fig 3:10



SMITH BROS
BOND





Fig 3:11



Fig 3:12



BOND

1904



Fig 3:13



Fig 3:14



Chapter 4

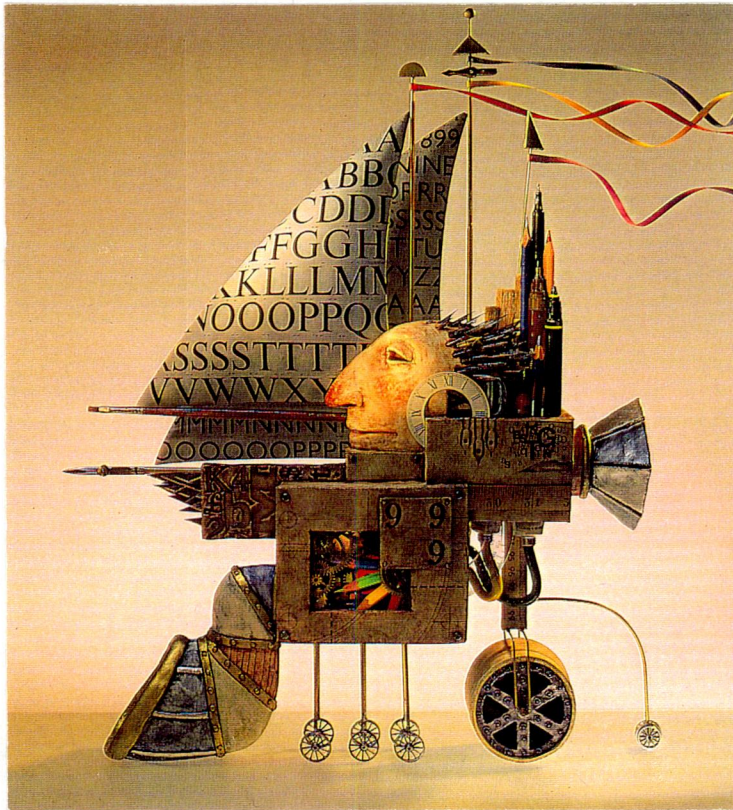


Fig 4:1

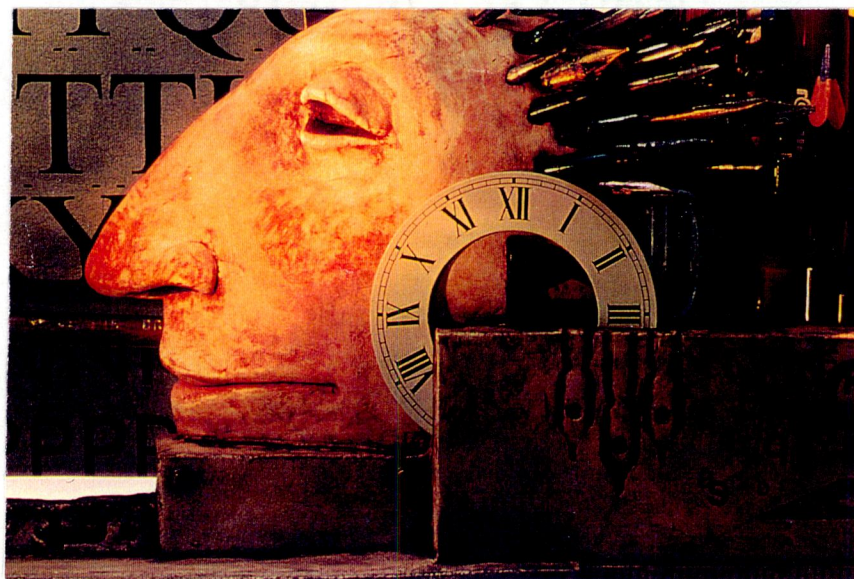


Fig 4:2





Fig 4:3

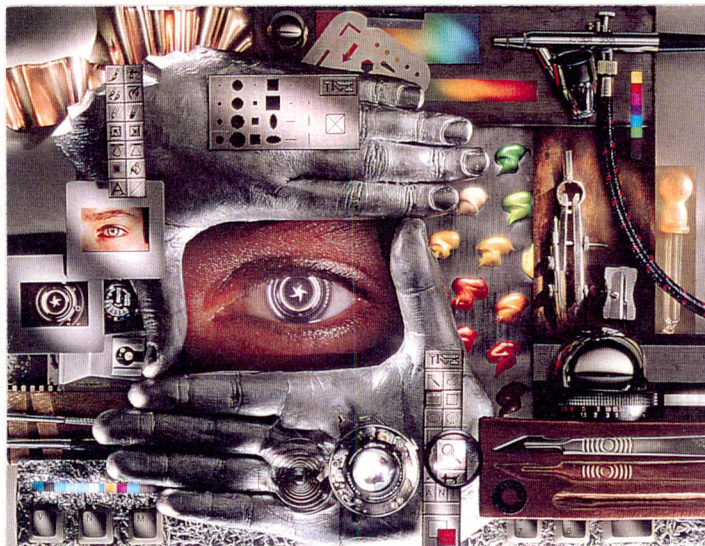


Fig 4:4



SWIFT BROOK
BAND





Fig 4:5



Fig 4:6





Fig 4:7

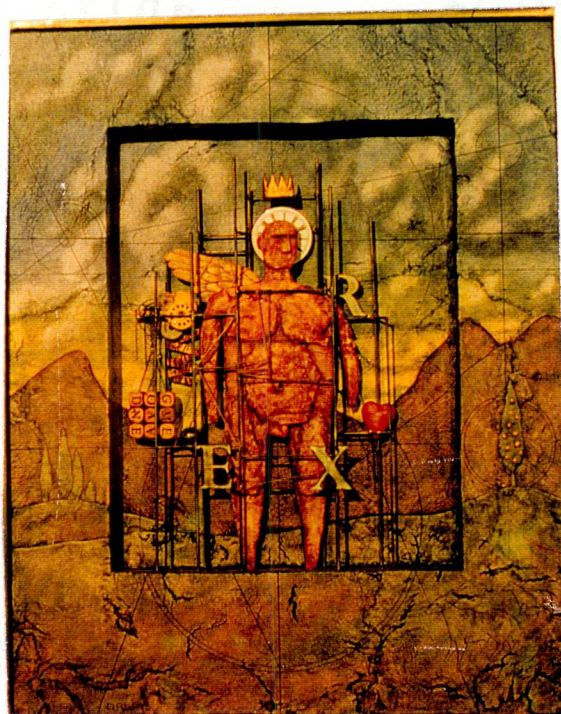
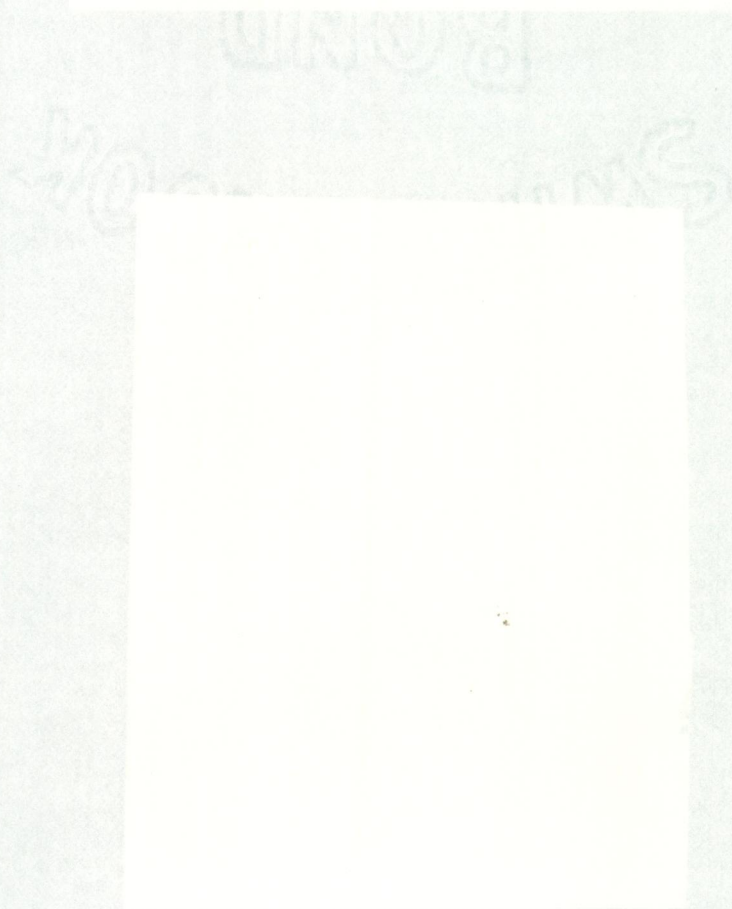


Fig 4:8



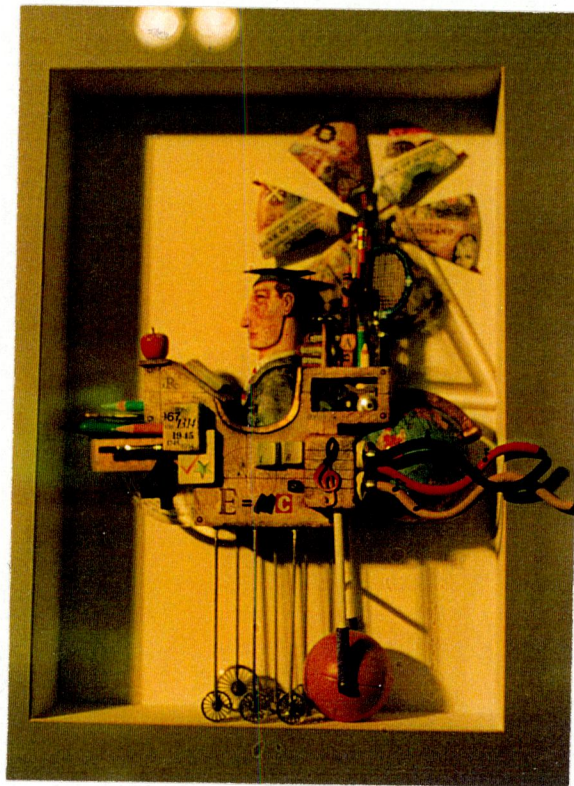


Fig 4:9

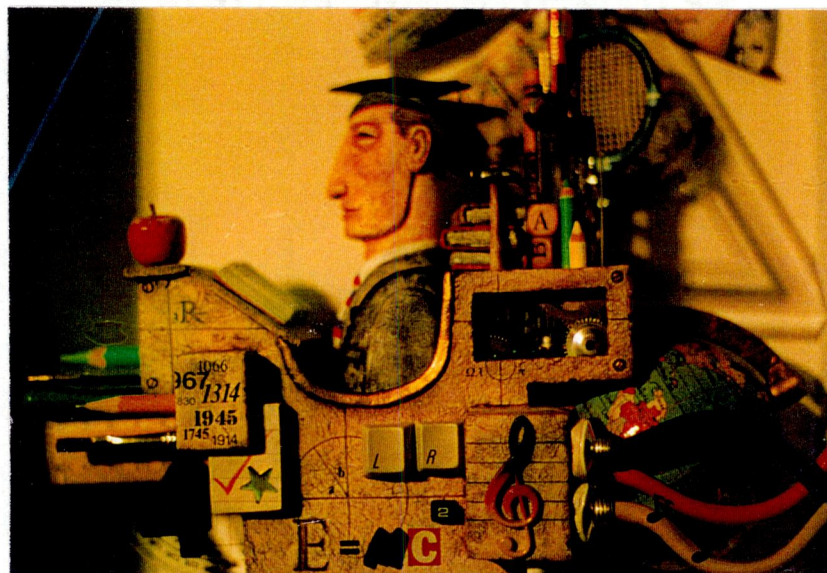


Fig 4:10

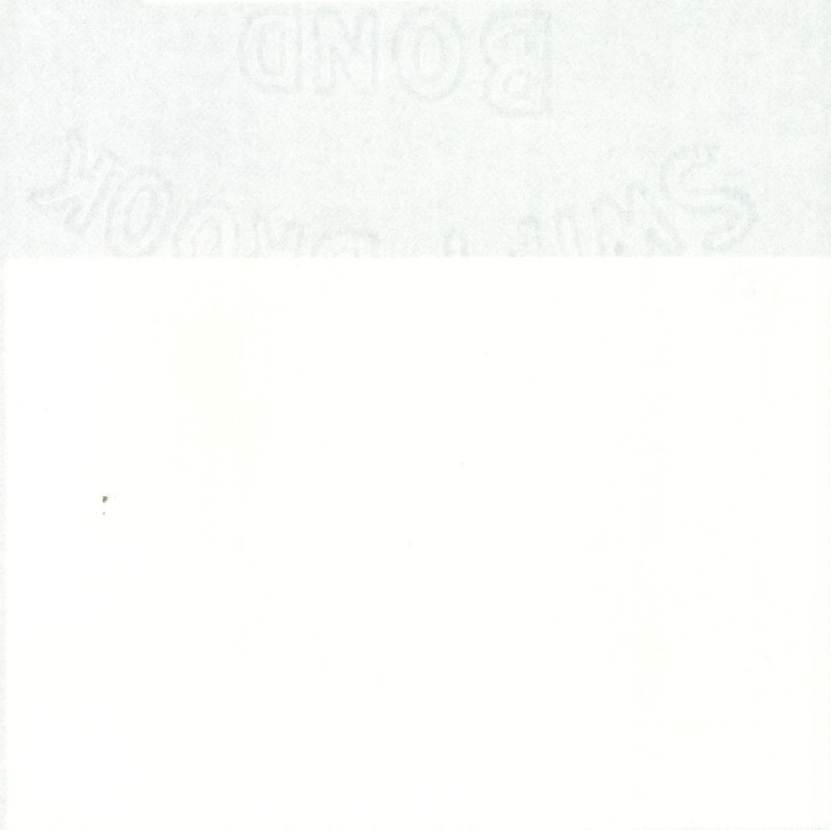




Fig 4:11



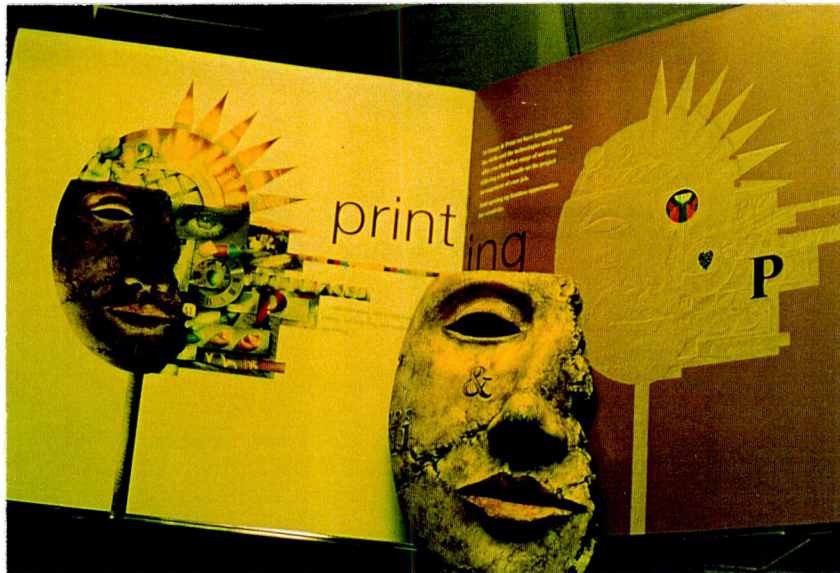


Fig 4:12

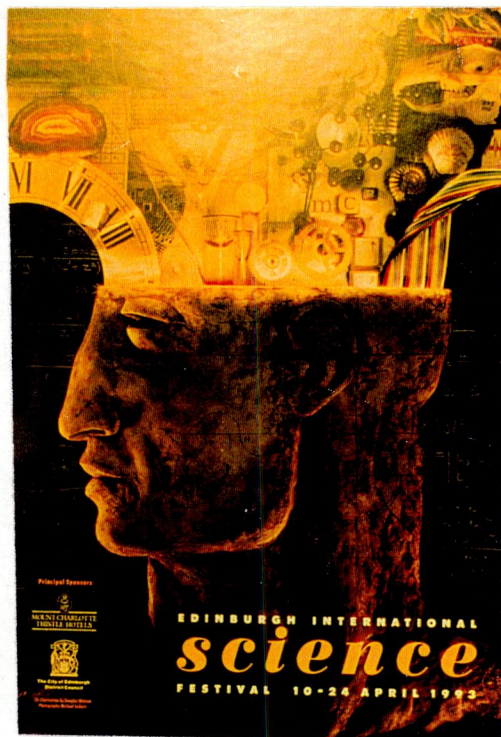


Fig 4:13



BOND

10/1



Fig 4:14

