

NC 0033268 2



T1502

# Illustrations

## Chapters 1–5

Paddy Cullivan  
Visual Communication 1995

# Illustrations

<b>Introduction</b>	<b>Figs. 1–6</b>
<b>Chapter 1: The Social and Historical Background</b>	<b>Figs. 1–5</b>
<b>Chapter 2: The Georgian Development of Gloucester St.</b>	<b>Figs. 1–14</b>
<b>Chapter 3: Post Georgian, Regency and Victorian Development of Gloucester St.</b>	<b>Figs. 1–4</b>
<b>Chapter 5: Modern Intervention and the Destruction of Gloucester St.</b>	<b>Figs. 1–15</b>

# **Introduction**

**Figs. 1–6**



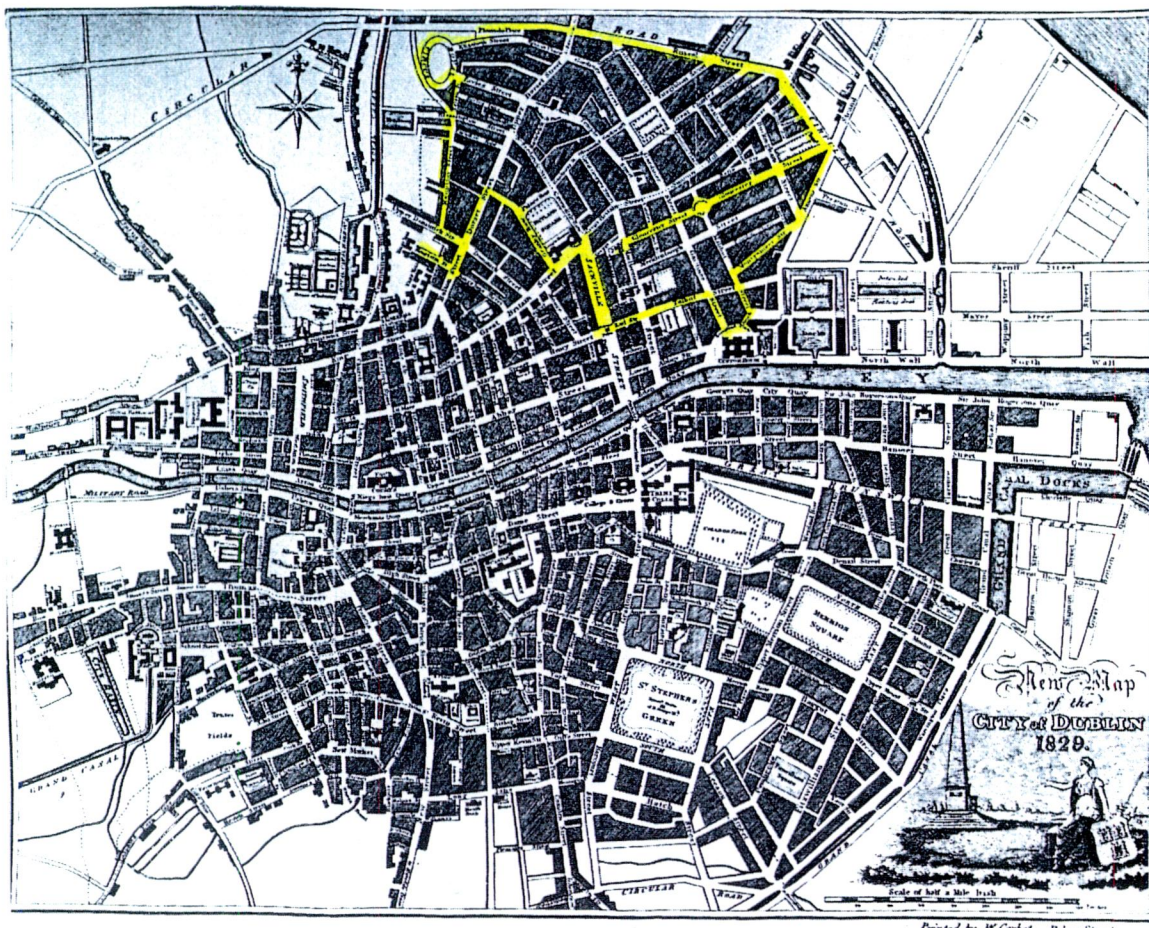


Fig. 1 The 1829 Map of Dublin showing the completed Georgian City

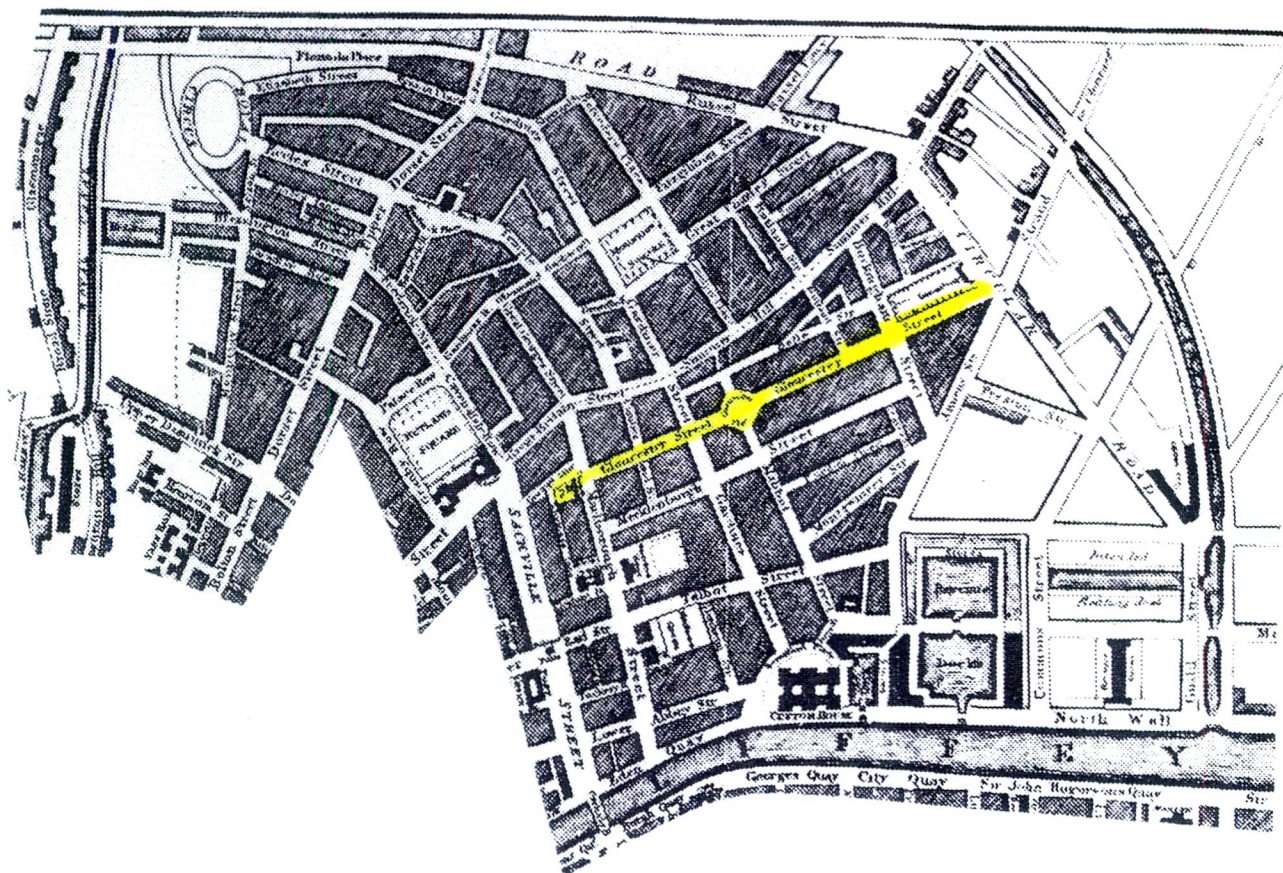


Fig. 1(a) The Development Empire of the Gardiner Dynasty. Gloucester St. is highlighted. The Eccles Estate is the section east of the line created by Sackville St. and Rutland Square.





Fig. 2 My House on North Great Georges St., a street that did not suffer the same fate as Gloucester St.





Fig. 3 A typical Dublin scene. This is Gardiner St. before total demolition. The modern building is a housing block from the mid '60s. The rear view of the houses is Gloucester St. before total demolition. The charming piece of wasteland was the site of forty Georgian houses





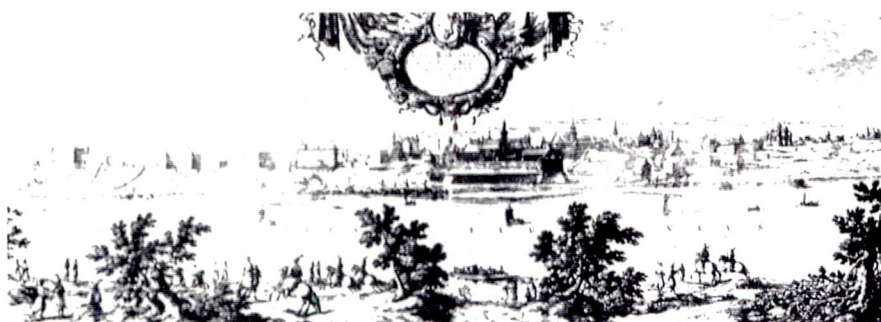
Fig. 4 The combination of functionalist and twee that is the new architecture of the '90s on Gloucester St.





# WARSZAWA

Fig. 6 The records and rebuilding of Warsaw.



# **Chapter 1**

**Figs. 1–5**





Fig. 1 Luke Gardiner I





Fig. 2 Henrietta St.

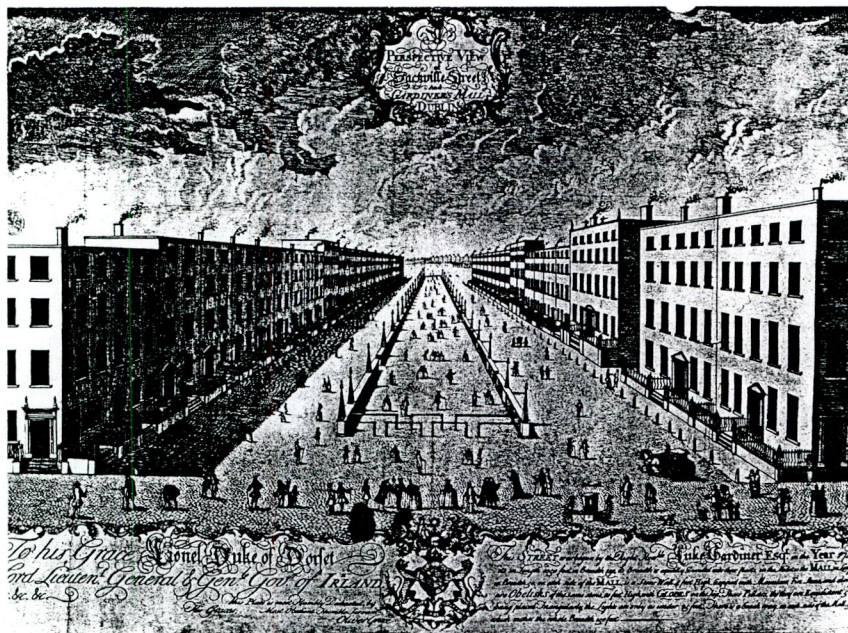


Fig. 3 Sackville St.





Fig. 4 Luke Gardiner II



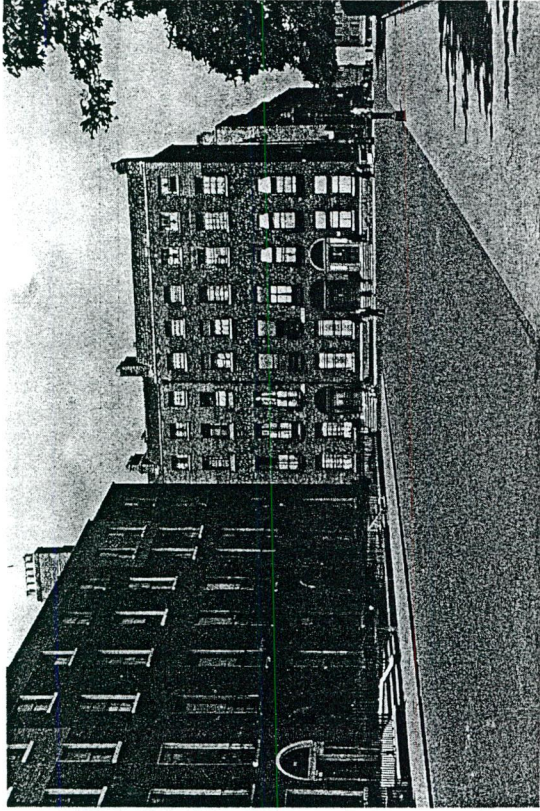
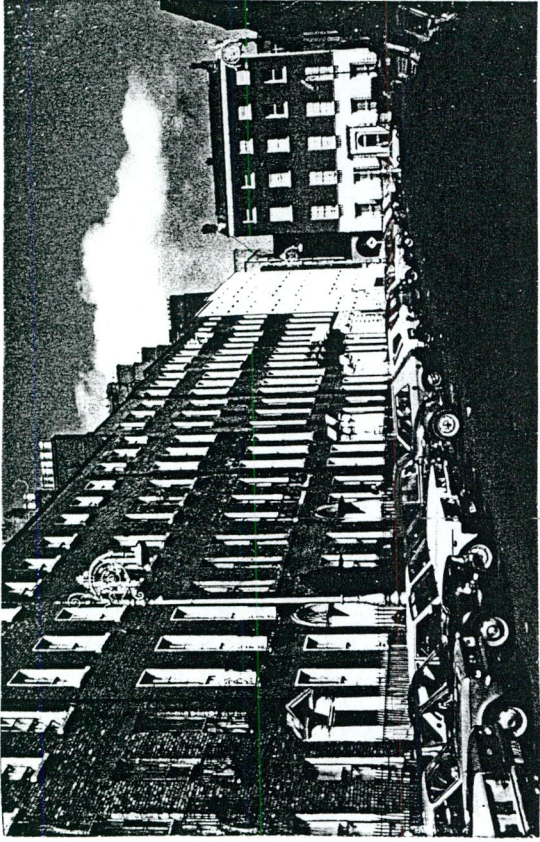
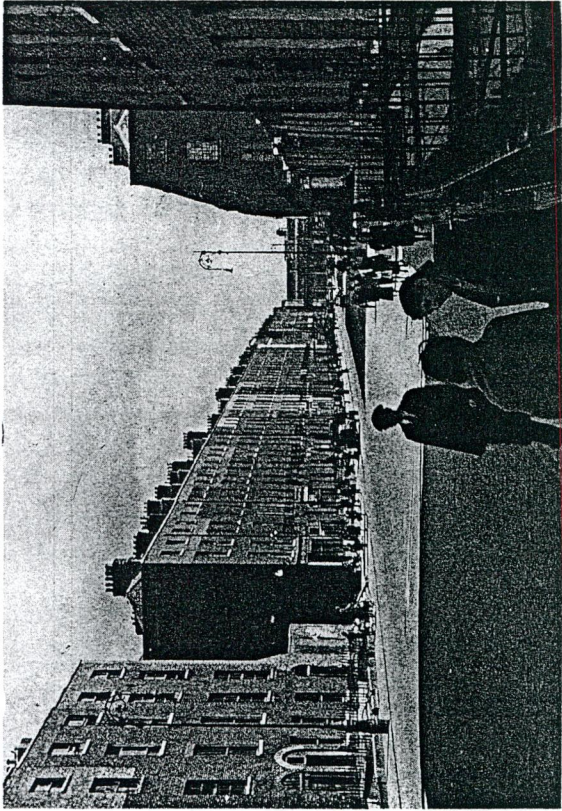


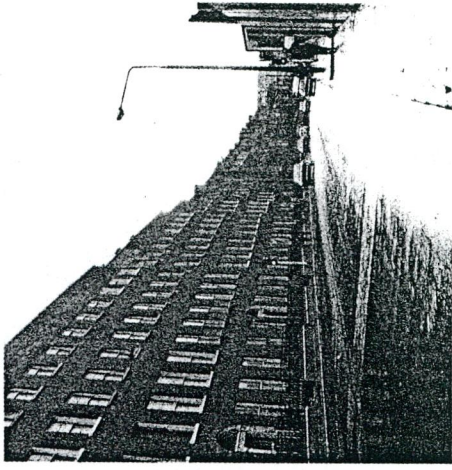
Fig. 5 Mountjoy Square



North Great Georges St.



Gardiner St.



Summerhill

## **Chapter 2**

**Figs. 1–14**



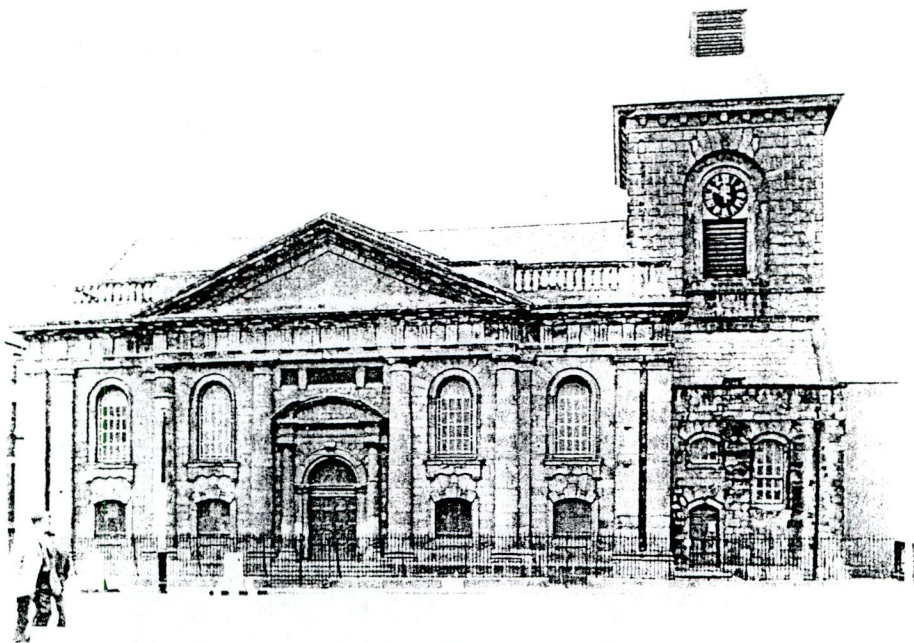


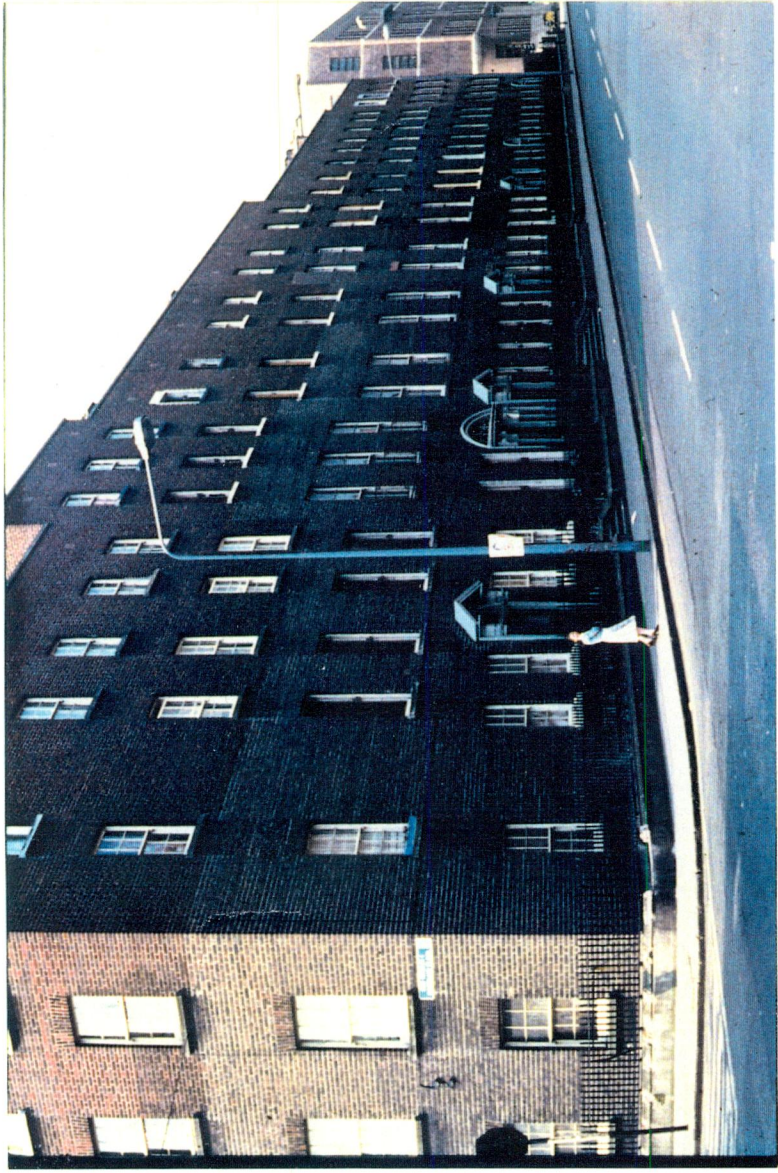
Fig. 1 St. Catherine's Church, Thomas St. (John Smyth)



Fig. 2 St. Thomas's Church, Marlborough St. (John Smyth)



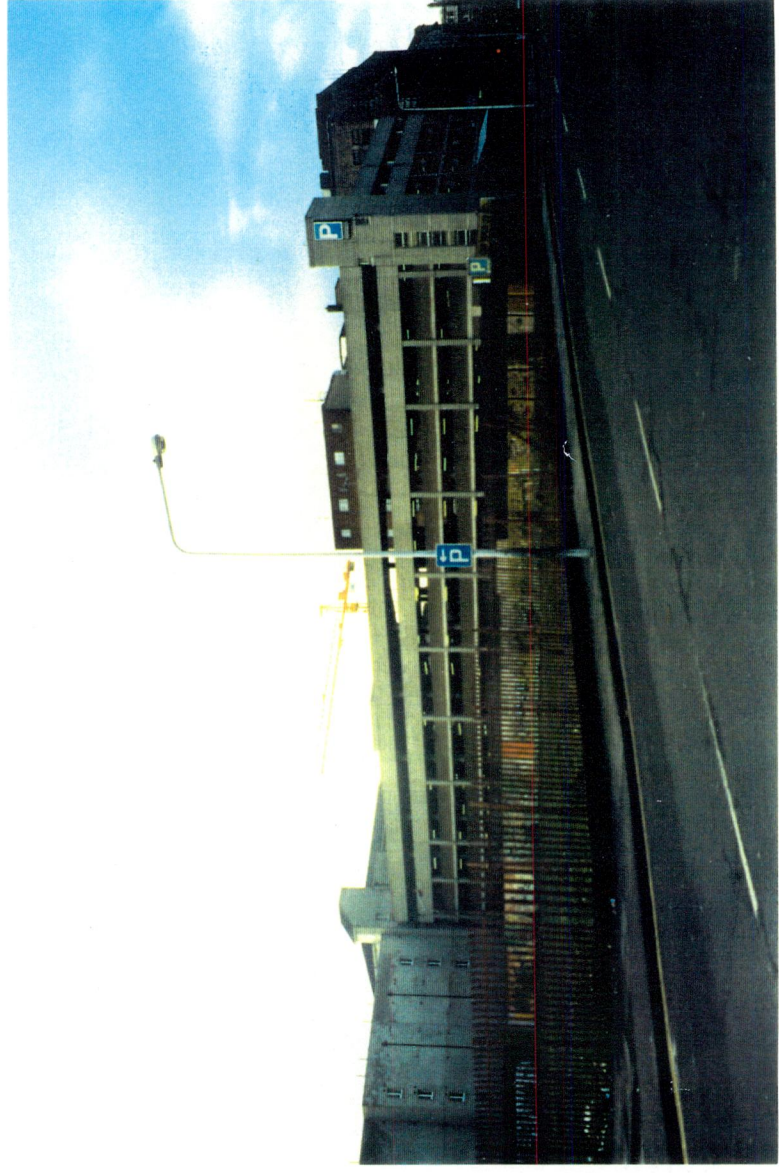
Fig. 3 Upper Gloucester St., 1978 and 1995



Nos. 1-11



Nos. 12-21







Nos. 33-45



Nos. 22-32





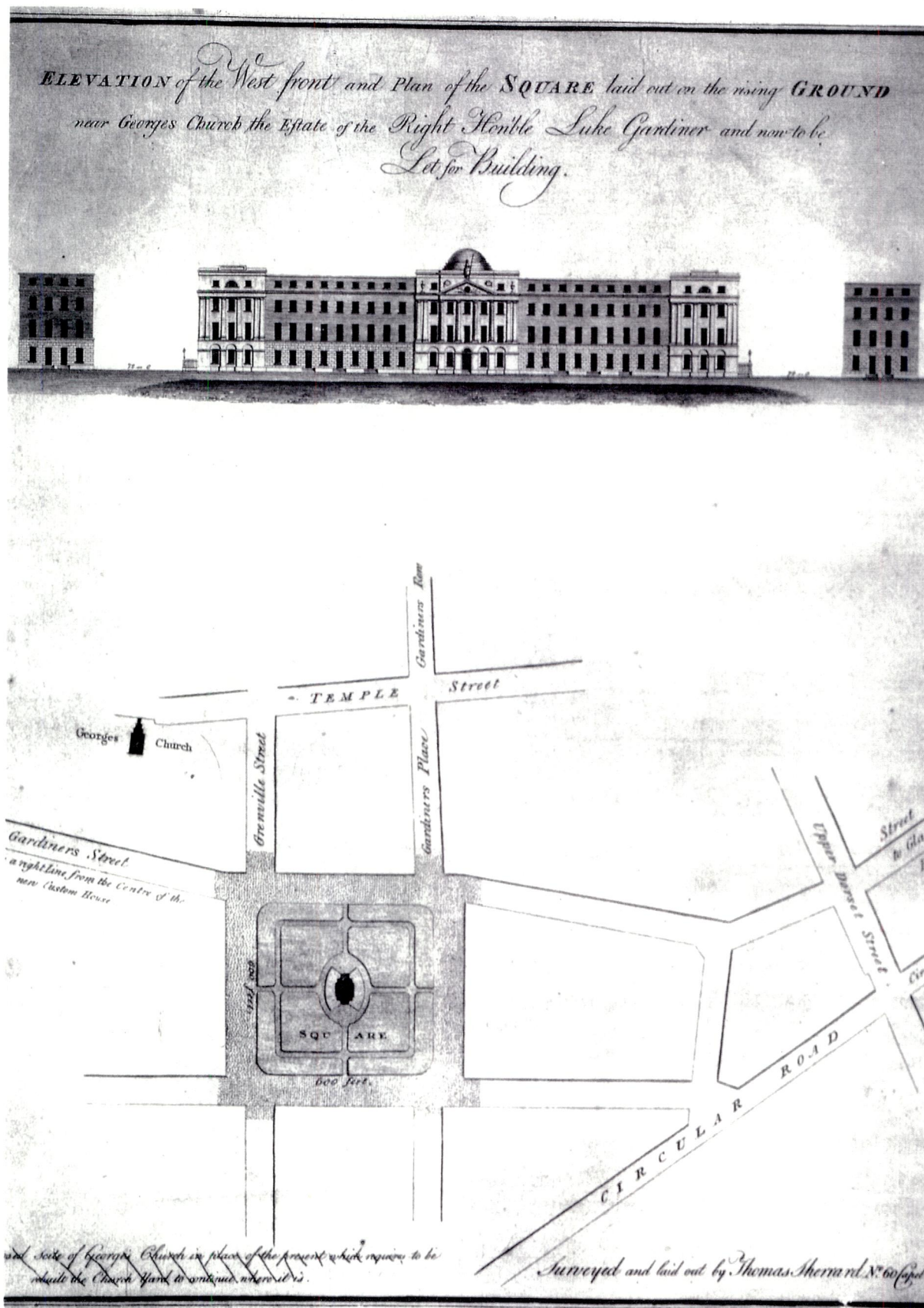


Fig. 4 The plan for a unified facade on Mountjoy Square.





Fig. 5 The Classic three-bay Georgian house





Fig. 7 No. 13 Upper Gloucester St.



Fig. 6 The door surround of No. 10 Upper Gloucester St.



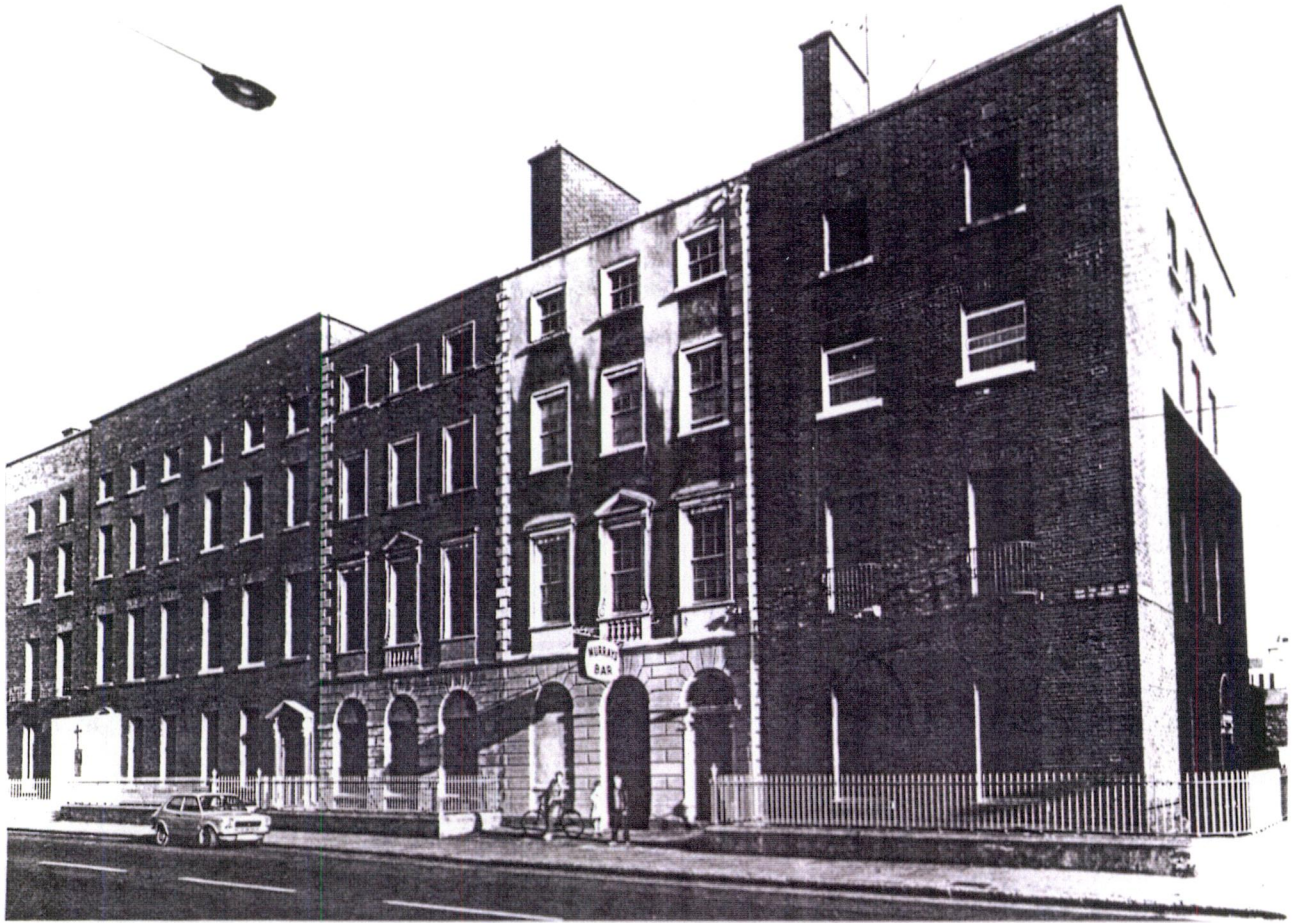


Fig. 7(a) Nos. 13 and 14 Upper Gloucester St.



Fig. 8 The doorways of Nos. 34 and 35 Upper Gloucester St.



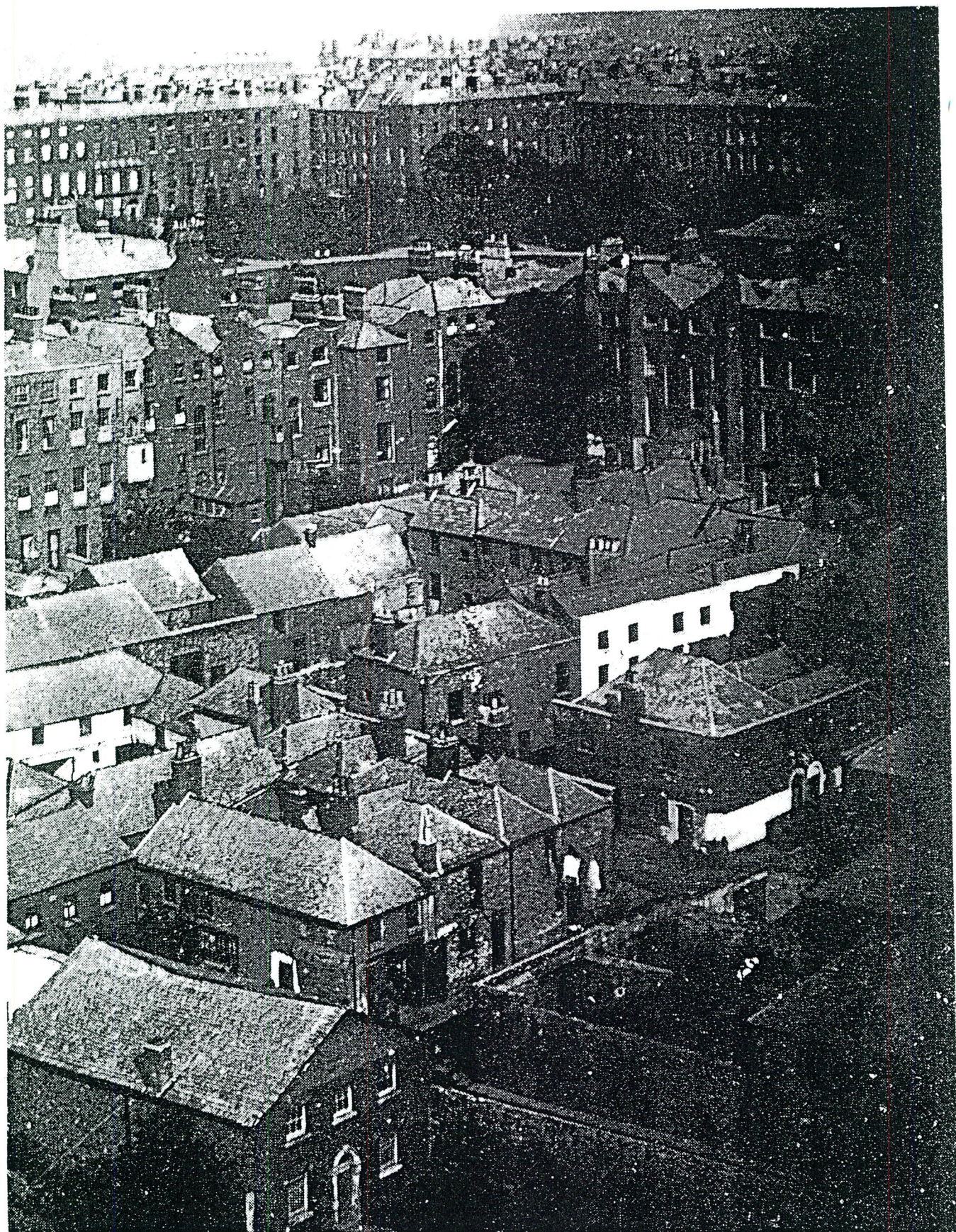


Fig. 9 The Mews house complex at the rear of Georgian Houses.



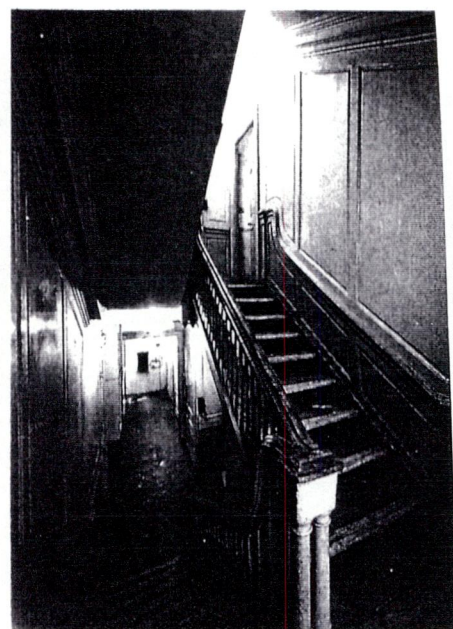


Fig. 10 Some typical Georgian interiors.

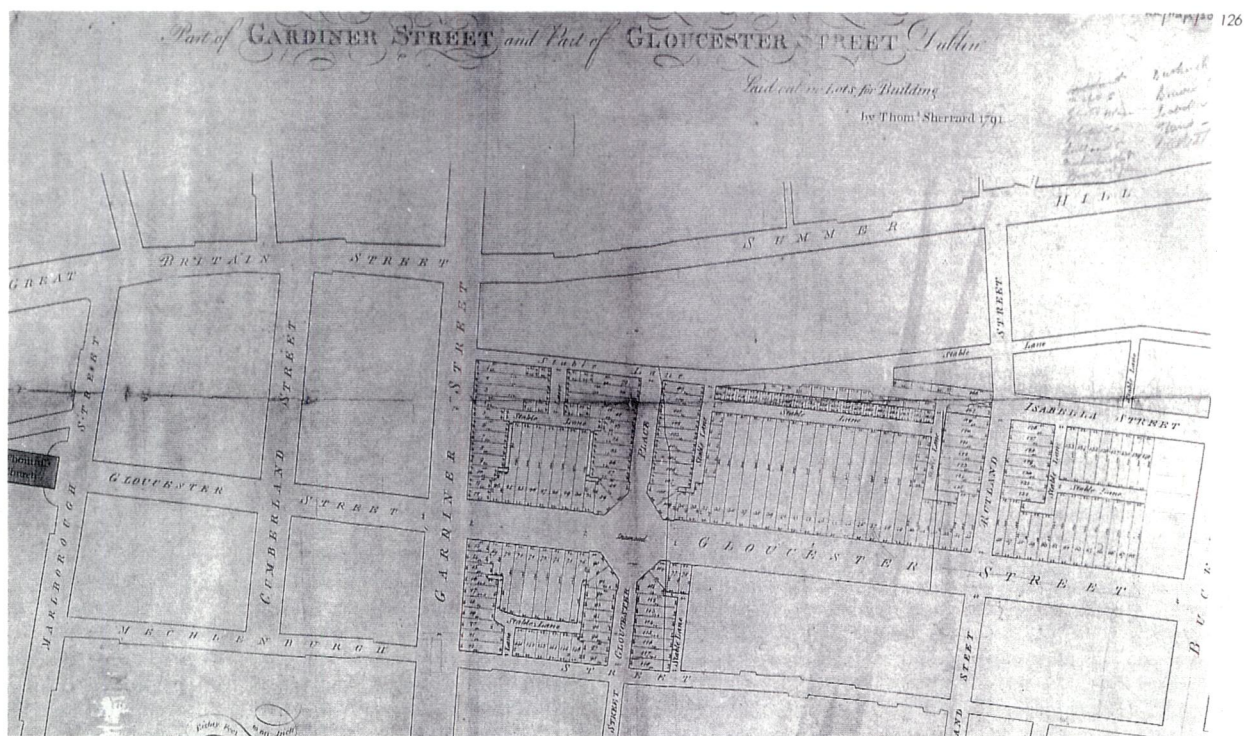


Fig. 11 Thomas Sherrard's Map of the Diamond from 1791





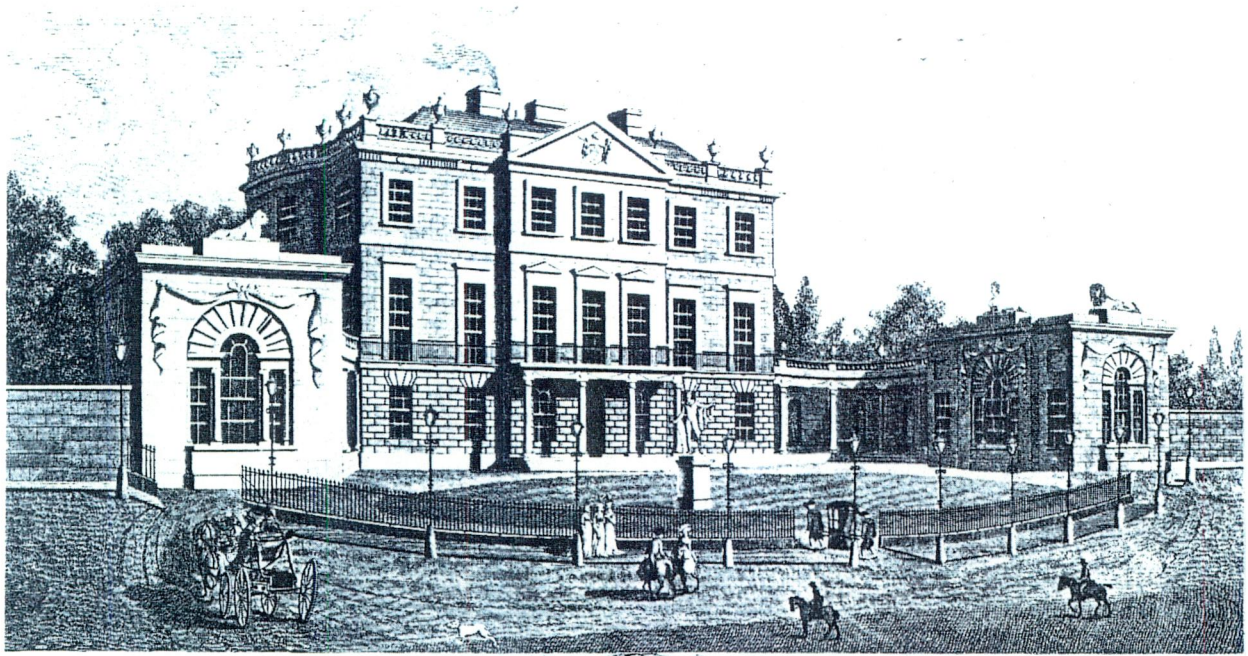
Fig. 12 Nos. 1–11 Lower Gloucester St. with the Diamond  
(altered in the 1960s), 1978 and 1995.





Fig. 12(a) Nos. 1-11 from Gardiner St.





ALDBOROUGH-HOUSE



D U B L I N

Fig. 13 Aldborough House (front)



Fig. 13(a) Aldborough House viewed from Gloucester St.



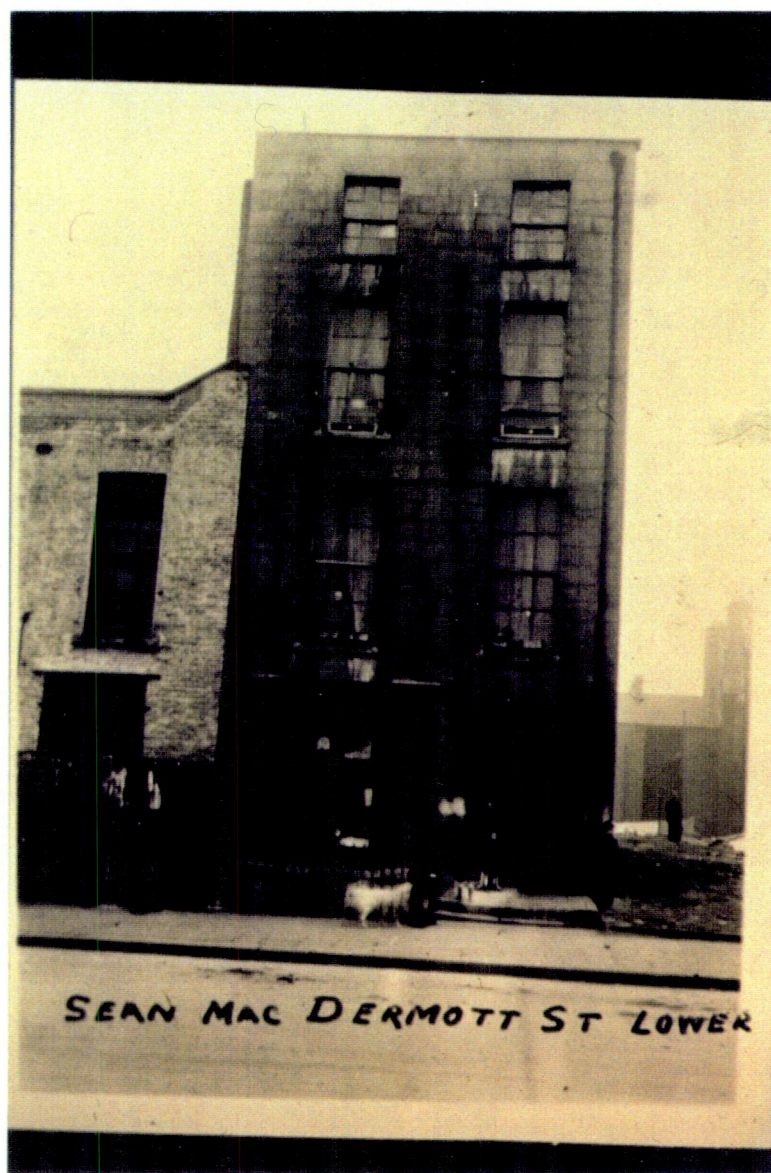


Fig. 14 The Photo of No. 86 Lower Gloucester St. that proved invaluable in recreating Nos. 78-88 Lower Gloucester St.





Fig. 14 Corporation Housing on the site of Nos. 22–26 Upper Gloucester St.



Fig. 15 Gresham House Apartment Block on the site of Nos. 33–45 Upper Gloucester St.



## **Chapter 3**

**Figs. 1–4**





Fig. 1 The Carpenter's Hall at No. 35 Lower Gloucester St.,  
1978 and 1995



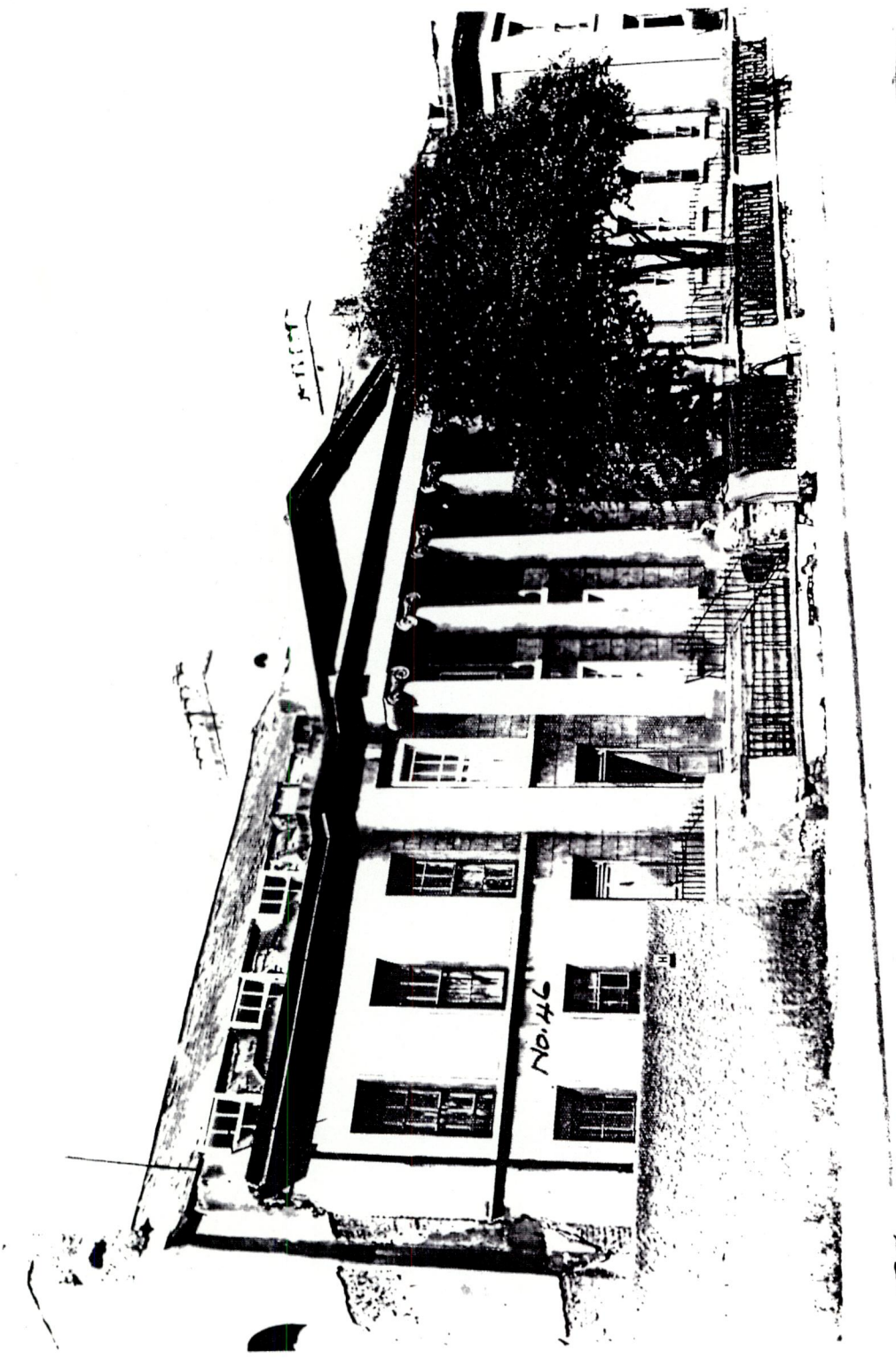


Fig. 2 George Papworth's Regency Terrace at Nos. 45-50  
Lower Gloucester St. (1980)





Fig. 3 The "Greek Revival" Presbyterian Church at Nos. 60–63 Lower Gloucester St. This was situated directly across from the Regency Terrace.



Fig. 4 The Convent of Our Lady of Charity erected in 1872 on Lower Gloucester St.



## **Chapter 5**

**Figs. 1–15**





Fig. 1 To the right, the new St. Thomas' Church by Frederick Hicks on the new Cathal Brugha St.





Fig. 2 St. Joseph's Mansions on Lower Gloucester St., built on the gardens of Aldborough House.



Fig. 3 St. Mary's Mansions on Lower Gloucester St.





Fig. 3(a) Interior of St. Mary's Mansions with common access stairways and balconies.



Fig. 4 The Neo-Romanesque Church of Our Lady of Lourdes.





Fig. 5 The flats scheme on Gardiner St. viewed from Lower Gloucester St.



Fig. 6 No. 96 Lower Gloucester St. in its present form.





Fig. 7 The Swimming Pool built on the site of  
Nos. 24–34 Lower Gloucester St.

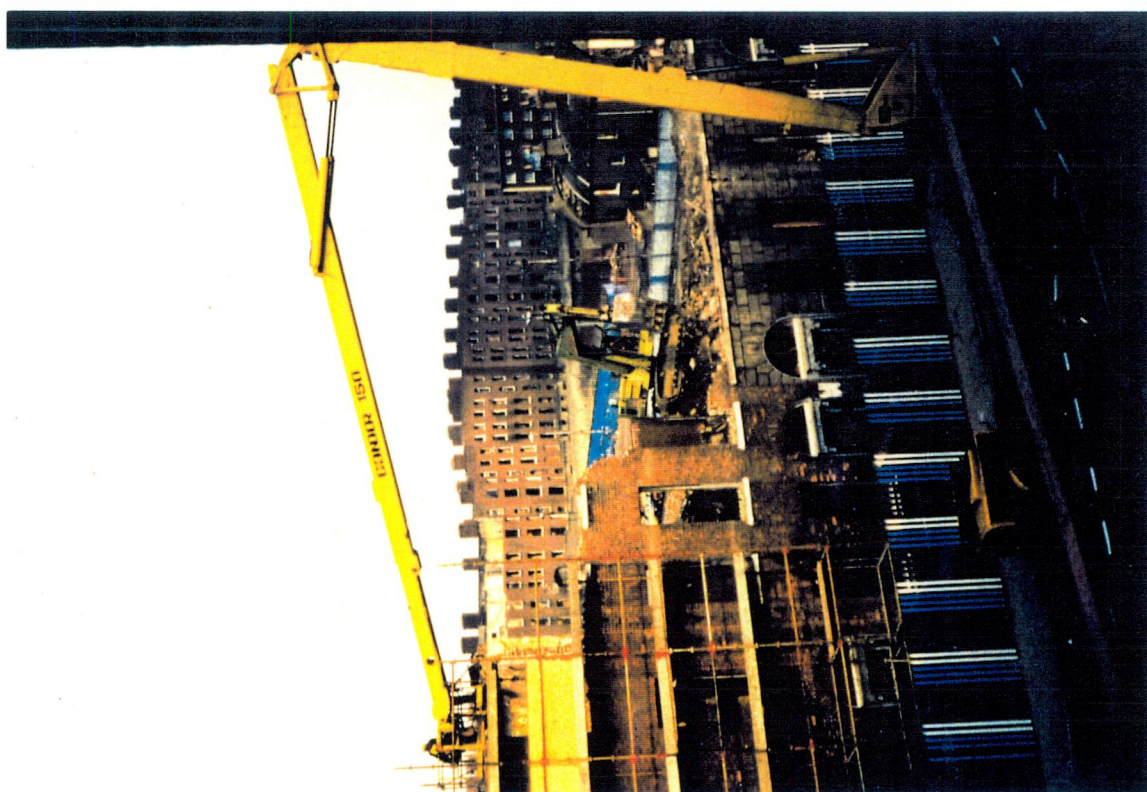


Fig. 8 The destruction of Lower Gloucester St. in 1981





Fig. 8(a) The destruction of Upper Gloucester St. in 1981



Fig. 9 The E.S.B. generator that replaced the Regency Terrace on Lower Gloucester St.





Fig. 10 The Car Park built on the site of Nos. 1-5 Upper Gloucester St.



Fig. 11 Corporation Housing built on the site of Nos. 12-21 Upper Gloucester St.





Fig. 12 Park landscaped on the site of Nos. 1-11 Lower Gloucester St.



Fig. 13 Custom Hall Apartment Block built on the site of Nos. 17-21 Upper Gloucester St.